



# EIF3H rabbit pAb

|                           |   |
|---------------------------|---|
| <b>Catalog No</b>         | BYab-07902  |
| <b>Isotype</b>            | IgG   |
| <b>Reactivity</b>         | Human; Mouse;Rat  |
| <b>Applications</b>       | WB  |
| <b>Gene Name</b>          | EIF3H EIF3S3  |
| <b>Protein Name</b>       | EIF3H   |
| <b>Immunogen</b>          | Synthesized peptide derived from human EIF3H AA range: 219-269  |
| <b>Specificity</b>        | This antibody detects endogenous levels of EIF3H at Human/Mouse/Rat   |
| <b>Formulation</b>        | Liquid in PBS containing 50% glycerol, 0.5% BSA and 0.16% sodium azide.   |
| <b>Source</b>             | Polyclonal, Rabbit,IgG  |
| <b>Purification</b>       | The antibody was affinity-purified from rabbit serum by affinity-chromatography using specific immunogen.   |
| <b>Dilution</b>           | WB 1:500-2000   |
| <b>Concentration</b>      | 1 mg/ml   |
| <b>Purity</b>             | ≥90%  |
| <b>Storage Stability</b>  | -20°C/1 year  |
| <b>Synonyms</b>           | Eukaryotic translation initiation factor 3 subunit H (eIF3h) (Eukaryotic translation initiation factor 3 subunit 3) (eIF-3-gamma) (eIF3 p40 subunit)  |
| <b>Observed Band</b>      | 38kD  |
| <b>Cell Pathway</b>       | Cytoplasm .   |
| <b>Tissue Specificity</b> | Adipose tissue,Cerebellum,Epithelium,Liver,Lung,Pituitary,  |
| <b>Function</b>           | function:Component of the eukaryotic translation initiation factor 3 (eIF-3) complex, which is required for several steps in the initiation of protein synthesis. The eIF-3 complex associates with the 40S ribosome and facilitates the recruitment of eIF-1, eIF-1A, eIF-2:GTP:methionyl-tRNAi and eIF-5 to form the 43S preinitiation complex (43S PIC). The eIF-3 complex stimulates mRNA recruitment to the 43S PIC and scanning of the mRNA for AUG recognition. The eIF-3 complex is also required for disassembly and recycling of posttermination ribosomal complexes and subsequently prevents premature joining of the 40S and 60S ribosomal subunits prior to initiation.,mass spectrometry: PubMed:17322308,mass spectrometry: PubMed:18599441,similarity:Belongs to the eIF-3 subunit H family.,similarity:Contains 1 MPN (JAB/Mov34) |

Nanjing BYabscience technology Co.,Ltd



domain.,subunit:Component of the eukaryotic translation initiation factor 3 (eIF

## Background

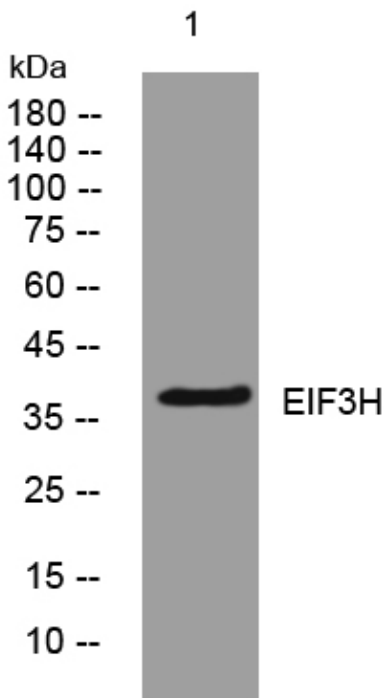
### matters needing attention

Avoid repeated freezing and thawing!

### Usage suggestions

This product can be used in immunological reaction related experiments. For more information, please consult technical personnel.

## Products Images



Western blot analysis of lysates from HeLa cells, primary antibody was diluted at 1:1000, 4° over night

Nanjing BYabscience technology Co.,Ltd

网址: [www.njbybio.com](http://www.njbybio.com)

官方热线: 025-5229-8998

监督电话: 15950492658