



COLGALT1 rabbit pAb

Catalog No	BYab-07890
Isotype	IgG
Reactivity	Human; Mouse
Applications	WB
Gene Name	GLT25D1 PSEC0241
Protein Name	COLGALT1
Immunogen	Synthesized peptide derived from human COLGALT1 AA range: 194-244
Specificity	This antibody detects endogenous levels of COLGALT1 at Human/Mouse
Formulation	Liquid in PBS containing 50% glycerol, 0.5% BSA and 0.04% sodium azide.
Source	Polyclonal, Rabbit,IgG
Purification	The antibody was affinity-purified from rabbit serum by affinity-chromatography using specific immunogen.
Dilution	WB 1:500-2000
Concentration	1 mg/ml
Purity	≥90%
Storage Stability	-20°C/1 year
Synonyms	Procollagen galactosyltransferase 1 (EC 2.4.1.50) (Glycosyltransferase 25 family member 1) (Hydroxylysine galactosyltransferase 1)
Observed Band	75kD
Cell Pathway	Endoplasmic reticulum lumen . Colocalized with PLOD3 and mannose binding lectin/MBL2. .
Tissue Specificity	Ubiquitous with higher levels in placenta, heart, lung and spleen.
Function	similarity:Belongs to the glycosyltransferase 25 family.,
Background	The protein encoded by this gene is one of two enzymes that transfers galactose moieties to hydroxylysine residues of collagen and mannose binding lectin. This gene is constitutively expressed and encodes a soluble protein that localizes to the endoplasmic reticulum. [provided by RefSeq, Dec 2015],
matters needing attention	Avoid repeated freezing and thawing!

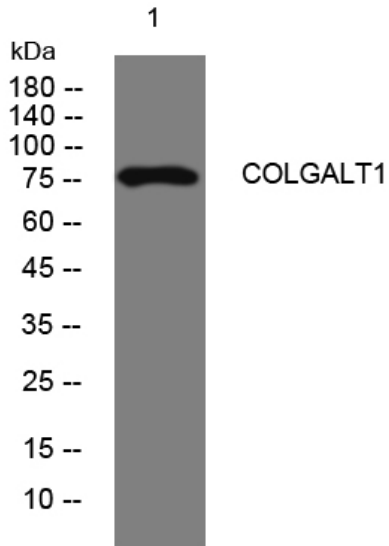
Nanjing BYabscience technology Co.,Ltd



Usage suggestions

This product can be used in immunological reaction related experiments. For more information, please consult technical personnel.

Products Images



Western blot analysis of lysates from PC-12 cells, primary antibody was diluted at 1:1000, 4° over night