



MSPD3 Polyclonal Antibody

Catalog No	BYab-07886
Isotype	IgG
Reactivity	Human;Mouse
Applications	WB;ELISA
Gene Name	MOSPD3
Protein Name	Motile sperm domain-containing protein 3
Immunogen	Synthesized peptide derived from part region of human protein
Specificity	MSPD3 Polyclonal Antibody detects endogenous levels of protein.
Formulation	Liquid in PBS containing 50% glycerol, and 0.02% sodium azide.
Source	Polyclonal, Rabbit,IgG
Purification	The antibody was affinity-purified from rabbit antiserum by affinity-chromatography using epitope-specific immunogen.
Dilution	WB 1:500-2000 ELISA 1:5000-20000
Concentration	1 mg/ml
Purity	≥90%
Storage Stability	-20°C/1 year
Synonyms	
Observed Band	25kD
Cell Pathway	Membrane ; Multi-pass membrane protein .
Tissue Specificity	Eye,Pancreas,
Function	similarity:Contains 1 MSP domain.,
Background	This gene encodes a multi-pass membrane protein with a major sperm protein (MSP) domain. The deletion of a similar mouse gene is associated with defective cardiac development and neonatal lethality. Alternate transcriptional splice variants, encoding different isoforms, have been described. [provided by RefSeq, Jul 2008],
matters needing attention	Avoid repeated freezing and thawing!

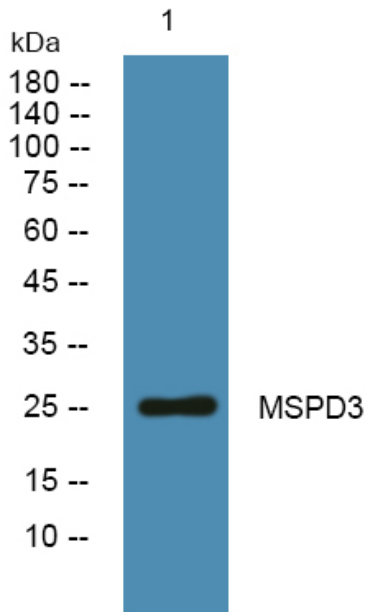
Nanjing BYabscience technology Co.,Ltd



Usage suggestions

This product can be used in immunological reaction related experiments. For more information, please consult technical personnel.

Products Images



Western blot analysis of lysates from U2OS cells, primary antibody was diluted at 1:1000, 4° over night