



GGCT Polyclonal Antibody

Catalog No	BYab-07885
Isotype	IgG
Reactivity	Human;Mouse
Applications	WB;ELISA
Gene Name	GGCT C7orf24 CRF21
Protein Name	Gamma-glutamylcyclotransferase (EC 2.3.2.4) (Cytochrome c-releasing factor 21)
Immunogen	Synthesized peptide derived from part region of human protein
Specificity	GGCT Polyclonal Antibody detects endogenous levels of protein.
Formulation	Liquid in PBS containing 50% glycerol, and 0.02% sodium azide.
Source	Polyclonal, Rabbit,IgG
Purification	The antibody was affinity-purified from rabbit antiserum by affinity-chromatography using epitope-specific immunogen.
Dilution	WB 1:500-2000 ELISA 1:5000-20000
Concentration	1 mg/ml
Purity	≥90%
Storage Stability	-20°C/1 year
Synonyms	
Observed Band	20kD
Cell Pathway	cytosol,extracellular exosome,
Tissue Specificity	Kidney,Lung,Skeletal muscle,Skin,Urinary bladder,
Function	catalytic activity:(Gamma-L-glutamyl)-L-amino acid = 5-oxoproline + L-amino acid.,function:Catalyzes the formation of 5-oxoproline from gamma-glutamyl dipeptides and may play a significant role in glutathione homeostasis. Induces release of cytochrome c from mitochondria with resultant induction of apoptosis.,induction:By geranylgeraniol.,similarity:Belongs to the gamma-glutamylcyclotransferase family.,subunit:Homodimer.,
Background	The protein encoded by this gene catalyzes the formation of 5-oxoproline from gamma-glutamyl dipeptides, the penultimate step in glutathione catabolism, and may play a critical role in glutathione homeostasis. The encoded protein may also play a role in cell proliferation, and the expression of this gene is a potential marker for cancer. Pseudogenes of this gene are located on the long arm of

Nanjing BYabscience technology Co.,Ltd



chromosome 5 and the short arm of chromosomes 2 and 20. Alternatively spliced transcript variants encoding multiple isoforms have been observed for this gene. [provided by RefSeq, Dec 2010],

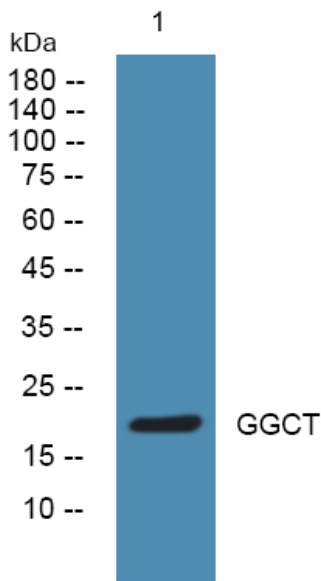
matters needing attention

Avoid repeated freezing and thawing!

Usage suggestions

This product can be used in immunological reaction related experiments. For more information, please consult technical personnel.

Products Images



Western blot analysis of lysates from K562 cells, primary antibody was diluted at 1:1000, 4° over night