



# SAA1 Polyclonal Antibody

<b>Catalog No</b>	BYab-07880
<b>Isotype</b>	IgG
<b>Reactivity</b>	Human;Mouse
<b>Applications</b>	WB;ELISA
<b>Gene Name</b>	SAA1
<b>Protein Name</b>	Serum amyloid A-1 protein (SAA) [Cleaved into: Amyloid protein A (Amyloid fibril protein AA); Serum amyloid protein A(2-104); Serum amyloid protein A(3-104); Serum amyloid protein A(2-103); Serum amyloid protein A(1-104)]
<b>Immunogen</b>	Synthesized peptide derived from part region of human protein AA range: 38-88
<b>Specificity</b>	SAA1 Polyclonal Antibody detects endogenous levels of protein.
<b>Formulation</b>	Liquid in PBS containing 50% glycerol, and 0.02% sodium azide.
<b>Source</b>	Polyclonal, Rabbit,IgG
<b>Purification</b>	The antibody was affinity-purified from rabbit antiserum by affinity-chromatography using epitope-specific immunogen.
<b>Dilution</b>	WB 1:500-2000 ELISA 1:5000-20000
<b>Concentration</b>	1 mg/ml
<b>Purity</b>	≥90%
<b>Storage Stability</b>	-20°C/1 year
<b>Synonyms</b>	
<b>Observed Band</b>	13kD
<b>Cell Pathway</b>	Secreted .
<b>Tissue Specificity</b>	Expressed by the liver; secreted in plasma (at protein level).
<b>Function</b>	disease:BOL is from a patient with Waldenstrom macroglobulinemia.,disease:JL is from a patient with ankylosing spondylitis.,disease:Reactive, secondary amyloidosis is characterized by the extracellular accumulation in various tissues of the SAA protein. These deposits are highly insoluble and resistant to proteolysis; they disrupt tissue structure and compromise function.,disease:TH is from a patient with juvenile rheumatoid arthritis.,function:Major acute phase reactant. Apolipoprotein of the HDL complex.,induction:Upon cytokine stimulation.,mass spectrometry: PubMed:12606051,mass spectrometry: PubMed:12973732,mass spectrometry:With variant Ala-70 PubMed:1463770,mass spectrometry:With variants Ala-70, Val-75, Asn-78 and 86-Leu-Thr-87 PubMed:1463770,miscellaneous:Elevated serum SSA protein

Nanjing BYabscience technology Co.,Ltd



levels may be associated with lung cancer.,polymorphism:Both SAA1 and SAA2 have a number of alleles

### Background

This gene encodes a member of the serum amyloid A family of apolipoproteins. The encoded preprotein is proteolytically processed to generate the mature protein. This protein is a major acute phase protein that is highly expressed in response to inflammation and tissue injury. This protein also plays an important role in HDL metabolism and cholesterol homeostasis. High levels of this protein are associated with chronic inflammatory diseases including atherosclerosis, rheumatoid arthritis, Alzheimer's disease and Crohn's disease. This protein may also be a potential biomarker for certain tumors. Alternate splicing results in multiple transcript variants that encode the same protein. A pseudogene of this gene is found on chromosome 11. [provided by RefSeq, Feb 2016],

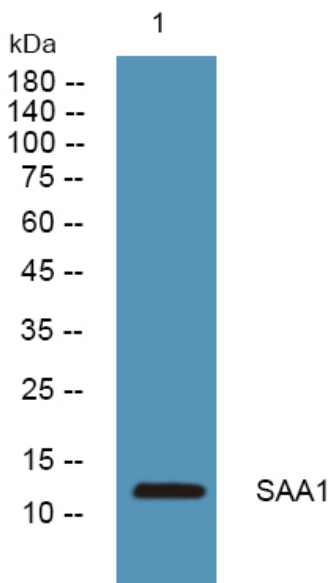
### matters needing attention

Avoid repeated freezing and thawing!

### Usage suggestions

This product can be used in immunological reaction related experiments. For more information, please consult technical personnel.

## Products Images



Western blot analysis of lysates from K562 cells, primary antibody was diluted at 1:1000, 4° over night