



# TRYB1 Polyclonal Antibody

<b>Catalog No</b>	BYab-07871
<b>Isotype</b>	IgG
<b>Reactivity</b>	Human;Mouse;Rat
<b>Applications</b>	WB;ELISA
<b>Gene Name</b>	TPSAB1 TPS1 TPS2 TPSB1
<b>Protein Name</b>	Tryptase alpha/beta-1 (Tryptase-1) (EC 3.4.21.59) (Tryptase I) (Tryptase alpha-1)
<b>Immunogen</b>	Synthesized peptide derived from part region of human protein AA range: 200-250
<b>Specificity</b>	TRYB1 Polyclonal Antibody detects endogenous levels of protein.
<b>Formulation</b>	Liquid in PBS containing 50% glycerol, and 0.02% sodium azide.
<b>Source</b>	Polyclonal, Rabbit,IgG
<b>Purification</b>	The antibody was affinity-purified from rabbit antiserum by affinity-chromatography using epitope-specific immunogen.
<b>Dilution</b>	WB 1:500-2000 ELISA 1:5000-20000
<b>Concentration</b>	1 mg/ml
<b>Purity</b>	≥90%
<b>Storage Stability</b>	-20°C/1 year
<b>Synonyms</b>	
<b>Observed Band</b>	30kD
<b>Cell Pathway</b>	Secreted. Released from the secretory granules upon mast cell activation. .
<b>Tissue Specificity</b>	Isoform 1 and isoform 2 are expressed in lung, stomach, spleen, heart and skin; in these tissues, isoform 1 is predominant. Isoform 2 is expressed in aorta, spleen, and breast tumor, with highest levels in the endothelial cells of some blood vessels surrounding the aorta, as well as those surrounding the tumor and low levels, if any, in mast cells (at protein level).
<b>Function</b>	catalytic activity:Preferential cleavage: Arg- -Xaa, Lys- -Xaa, but with more restricted specificity than trypsin.,function:Tryptase is the major neutral protease present in mast cells and is secreted upon the coupled activation-degranulation response of this cell type.,function:Tryptase is the major neutral protease present in mast cells and is secreted upon the coupled activation-degranulation response of this cell type. Has an immunoprotective role during bacterial infection. Required to efficiently combat K.pneumoniae infection.,polymorphism:There are two alleles; beta-II and beta-III which differ by 3 residues.,similarity:Belongs to the peptidase

Nanjing BYabscience technology Co.,Ltd



S1 family.,similarity:Belongs to the peptidase S1 family. Tryptase subfamily.,similarity:Contains 1 peptidase S1 domain.,subcellular location:Released from the secretory granules upon mast cell activation.,subunit:Homotetramer.,

### Background

Tryptases comprise a family of trypsin-like serine proteases, the peptidase family S1. Tryptases are enzymatically active only as heparin-stabilized tetramers, and they are resistant to all known endogenous proteinase inhibitors. Several tryptase genes are clustered on chromosome 16p13.3. These genes are characterized by several distinct features. They have a highly conserved 3' UTR and contain tandem repeat sequences at the 5' flank and 3' UTR which are thought to play a role in regulation of the mRNA stability. These genes have an intron immediately upstream of the initiator Met codon, which separates the site of transcription initiation from protein coding sequence. This feature is characteristic of tryptases but is unusual in other genes. The alleles of this gene exhibit an unusual amount of sequence variation, such that the alleles were once thought to represent two separate gene

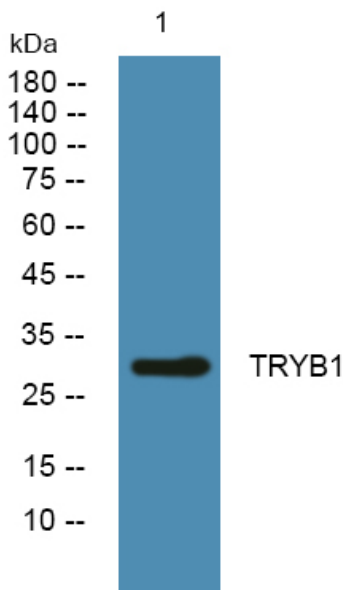
### matters needing attention

Avoid repeated freezing and thawing!

### Usage suggestions

This product can be used in immunological reaction related experiments. For more information, please consult technical personnel.

## Products Images



Nanjing BYabscience technology Co.,Ltd