



CO8G Polyclonal Antibody

Catalog No	BYab-07863
Isotype	IgG
Reactivity	Human;Mouse
Applications	WB;ELISA
Gene Name	C8G
Protein Name	Complement component C8 gamma chain
Immunogen	Synthesized peptide derived from part region of human protein
Specificity	CO8G Polyclonal Antibody detects endogenous levels of protein.
Formulation	Liquid in PBS containing 50% glycerol, and 0.02% sodium azide.
Source	Polyclonal, Rabbit,IgG
Purification	The antibody was affinity-purified from rabbit antiserum by affinity-chromatography using epitope-specific immunogen.
Dilution	WB 1:500-2000 ELISA 1:5000-20000
Concentration	1 mg/ml
Purity	≥90%
Storage Stability	-20°C/1 year
Synonyms	
Observed Band	22kD
Cell Pathway	Secreted.
Tissue Specificity	Blood,Colon,Liver,
Function	function:C8 is a constituent of the membrane attack complex. C8 binds to the C5B-7 complex, forming the C5B-8 complex. C5-B8 binds C9 and acts as a catalyst in the polymerization of C9. The gamma subunit seems to be able to bind retinol.,similarity:Belongs to the calycin superfamily. Lipocalin family.,subunit:C8 is composed of three chains: alpha, beta and gamma. The alpha and gamma chains are disulfide bonded.,
Background	The protein encoded by this gene belongs to the lipocalin family. It is one of the three subunits that constitutes complement component 8 (C8), which is composed of a disulfide-linked C8 alpha-gamma heterodimer and a non-covalently associated C8 beta chain. C8 participates in the formation of the membrane attack complex (MAC) on bacterial cell membranes. While subunits alpha and beta play

Nanjing BYabscience technology Co.,Ltd



a role in complement-mediated bacterial killing, the gamma subunit is not required for the bactericidal activity. [provided by RefSeq, Jul 2011],

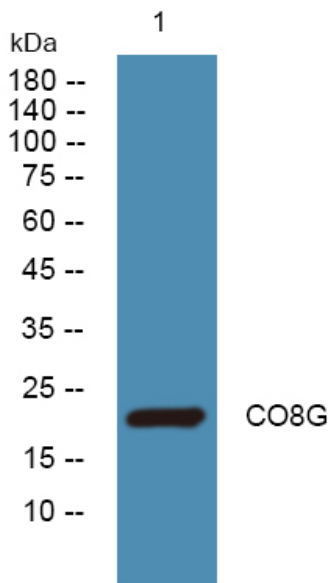
matters needing attention

Avoid repeated freezing and thawing!

Usage suggestions

This product can be used in immunological reaction related experiments. For more information, please consult technical personnel.

Products Images



Western blot analysis of lysates from KB cells, primary antibody was diluted at 1:1000, 4°over night