



RFA4 Polyclonal Antibody

Catalog No	BYab-07834
Isotype	IgG
Reactivity	Human;Rat;Mouse;
Applications	WB;ELISA
Gene Name	RPA4
Protein Name	Replication protein A 30 kDa subunit (RP-A p30) (Replication factor A protein 4) (RF-A protein 4)
Immunogen	Synthesized peptide derived from part region of human protein
Specificity	RFA4 Polyclonal Antibody detects endogenous levels of protein.
Formulation	Liquid in PBS containing 50% glycerol, and 0.02% sodium azide.
Source	Polyclonal, Rabbit,IgG
Purification	The antibody was affinity-purified from rabbit antiserum by affinity-chromatography using epitope-specific immunogen.
Dilution	WB 1:500-2000 ELISA 1:5000-20000
Concentration	1 mg/ml
Purity	≥90%
Storage Stability	-20°C/1 year
Synonyms	
Observed Band	28kD
Cell Pathway	Nucleus . Localizes to DNA repair foci after DNA damage.
Tissue Specificity	Preferentially expressed in placental and colon mucosa. Widely expressed at intermediate or lower levels.
Function	function:Absolutely required for simian virus 40 DNA replication in vitro. It participates in a very early step in initiation. RP-A is a single-stranded DNA-binding protein.,subunit:Interacts with RPA1 and RPA3. In a tissue-specific manner, may replace RPA2 in the replication protein A heterotrimer.,tissue specificity:Preferentially expressed in placental and colon mucosa.,
Background	This gene encodes a single-stranded DNA-binding protein that is the 30-kDa subunit of the replication protein A complex. Replication protein A is an essential factor for DNA double-strand break repair and cell cycle checkpoint activation. The encoded protein localizes to DNA repair foci and may be involved in the cellular DNA damage response. This protein may also play a role in inhibiting viral replication.[provided by RefSeq, Apr 2010],

Nanjing BYabscience technology Co.,Ltd



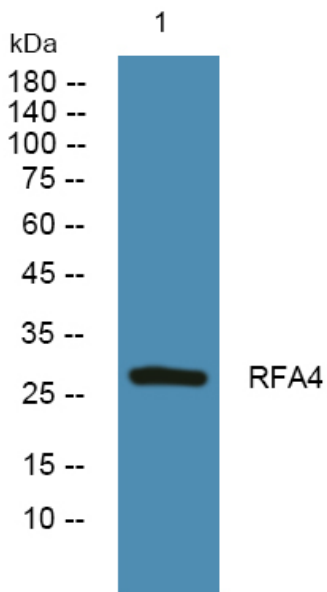
matters needing attention

Avoid repeated freezing and thawing!

Usage suggestions

This product can be used in immunological reaction related experiments. For more information, please consult technical personnel.

Products Images



Western blot analysis of lysates from K562 cells, primary antibody was diluted at 1:1000, 4° over night