



RAB14 Polyclonal Antibody

Catalog No	BYab-07829
Isotype	IgG
Reactivity	Human;Mouse;Rat
Applications	WB;ELISA
Gene Name	RAB14
Protein Name	Ras-related protein Rab-14
Immunogen	Synthesized peptide derived from part region of human protein
Specificity	RAB14 Polyclonal Antibody detects endogenous levels of protein.
Formulation	Liquid in PBS containing 50% glycerol, and 0.02% sodium azide.
Source	Polyclonal, Rabbit,IgG
Purification	The antibody was affinity-purified from rabbit antiserum by affinity-chromatography using epitope-specific immunogen.
Dilution	WB 1:500-2000 ELISA 1:5000-20000
Concentration	1 mg/ml
Purity	≥90%
Storage Stability	-20°C/1 year
Synonyms	
Observed Band	23kD
Cell Pathway	Recycling endosome . Early endosome membrane ; Lipid-anchor ; Cytoplasmic side . Golgi apparatus membrane ; Lipid-anchor ; Cytoplasmic side . Golgi apparatus, trans-Golgi network membrane ; Lipid-anchor ; Cytoplasmic side . Cytoplasmic vesicle, phagosome . Recruited to recycling endosomes by DENND6A (PubMed:22595670). Recruited to phagosomes containing S.aureus or M.tuberculosis (PubMed:21255211) .
Tissue Specificity	Adrenal gland,B-cell lymphoma,Brain,Liver,Melanoma,Placenta,Platele
Function	function:May be involved in vesicular trafficking and neurotransmitter release.,similarity:Belongs to the small GTPase superfamily. Rab family.,
Background	RAB14 belongs to the large RAB family of low molecular mass GTPases that are involved in intracellular membrane trafficking. These proteins act as molecular switches that flip between an inactive GDP-bound state and an active GTP-bound state in which they recruit downstream effector proteins onto membranes (Junutula et al., 2004 [PubMed 15004230]).[supplied by OMIM, Mar 2009],

Nanjing BYabscience technology Co.,Ltd



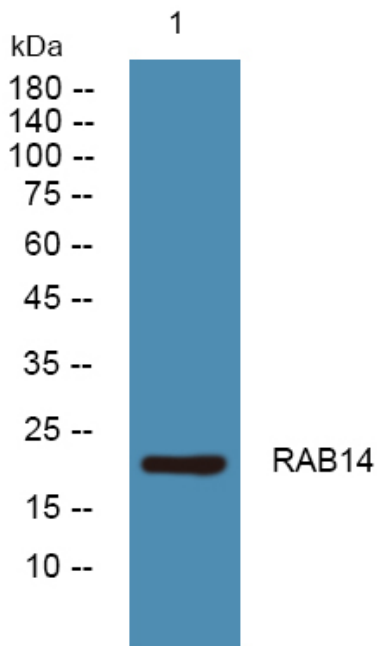
matters needing attention

Avoid repeated freezing and thawing!

Usage suggestions

This product can be used in immunological reaction related experiments. For more information, please consult technical personnel.

Products Images



Western blot analysis of lysates from KB cells, primary antibody was diluted at 1:1000, 4° over night