



ACPM Polyclonal Antibody

Catalog No	BYab-07817
Isotype	IgG
Reactivity	Human;Mouse
Applications	WB;ELISA
Gene Name	NDUFAB1
Protein Name	Acyl carrier protein, mitochondrial (ACP) (CI-SDAP) (NADH-ubiquinone oxidoreductase 9.6 kDa subunit)
Immunogen	Synthesized peptide derived from part region of human protein
Specificity	ACPM Polyclonal Antibody detects endogenous levels of protein.
Formulation	Liquid in PBS containing 50% glycerol, and 0.02% sodium azide.
Source	Polyclonal, Rabbit,IgG
Purification	The antibody was affinity-purified from rabbit antiserum by affinity-chromatography using epitope-specific immunogen.
Dilution	WB 1:500-2000 ELISA 1:5000-20000
Concentration	1 mg/ml
Purity	≥90%
Storage Stability	-20°C/1 year
Synonyms	
Observed Band	17kD
Cell Pathway	Mitochondrion .
Tissue Specificity	Skin,
Function	function:Carrier of the growing fatty acid chain in fatty acid biosynthesis in mitochondria. Accessory and non-catalytic subunit of the mitochondrial membrane respiratory chain NADH dehydrogenase (Complex I), which functions in the transfer of electrons from NADH to the respiratory chain.,similarity:Contains 1 acyl carrier domain.,subunit:Mammalian complex I is composed of 45 different subunits.,
Background	function:Carrier of the growing fatty acid chain in fatty acid biosynthesis in mitochondria. Accessory and non-catalytic subunit of the mitochondrial membrane respiratory chain NADH dehydrogenase (Complex I), which functions in the transfer of electrons from NADH to the respiratory chain.,similarity:Contains 1 acyl carrier domain.,subunit:Mammalian complex I is composed of 45 different

Nanjing BYabscience technology Co.,Ltd



subunits.,

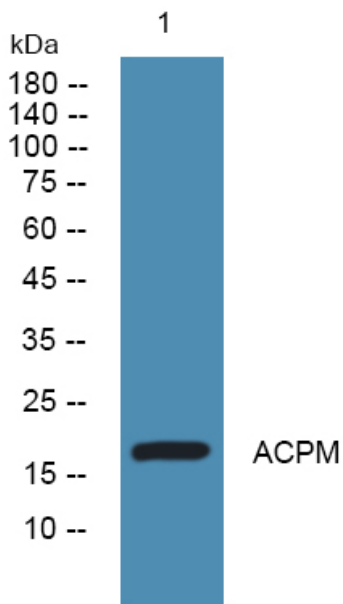
matters needing attention

Avoid repeated freezing and thawing!

Usage suggestions

This product can be used in immunological reaction related experiments. For more information, please consult technical personnel.

Products Images



Western blot analysis of lysates from KB cells, primary antibody was diluted at 1:1000, 4° over night