



ATOH7 Polyclonal Antibody

Catalog No	BYab-07815
Isotype	IgG
Reactivity	Human;Mouse
Applications	WB;ELISA
Gene Name	ATOH7 ATH5 BHLHA13
Protein Name	Protein atonal homolog 7 (Class A basic helix-loop-helix protein 13) (bHLHa13) (Helix-loop-helix protein hATH-5) (hATH5)
Immunogen	Synthesized peptide derived from part region of human protein
Specificity	ATOH7 Polyclonal Antibody detects endogenous levels of protein.
Formulation	Liquid in PBS containing 50% glycerol, and 0.02% sodium azide.
Source	Polyclonal, Rabbit,IgG
Purification	The antibody was affinity-purified from rabbit antiserum by affinity-chromatography using epitope-specific immunogen.
Dilution	WB 1:500-2000 ELISA 1:5000-20000
Concentration	1 mg/ml
Purity	≥90%
Storage Stability	-20°C/1 year
Synonyms	
Observed Band	16kD
Cell Pathway	Nucleus . Perikaryon . Cell projection, axon .
Tissue Specificity	Eye,
Function	function:Transcription factor involved in the differentiation of retinal ganglion cells.,similarity:Contains 1 basic helix-loop-helix (bHLH) domain.,
Background	This intronless gene encodes a member of the basic helix-loop-helix family of transcription factors, with similarity to Drosophila atonal gene that controls photoreceptor development. Studies in mice suggest that this gene plays a central role in retinal ganglion cell and optic nerve formation. Mutations in this gene are associated with nonsyndromic congenital retinal nonattachment. [provided by RefSeq, Dec 2011],
matters needing attention	Avoid repeated freezing and thawing!

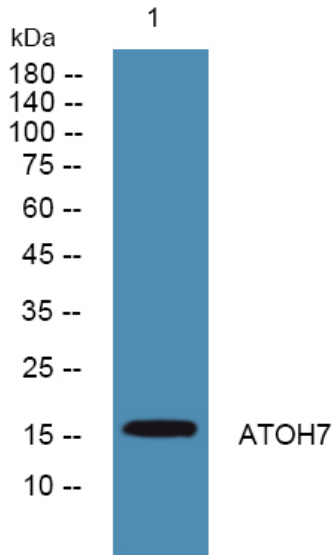
Nanjing BYabscience technology Co.,Ltd



Usage suggestions

This product can be used in immunological reaction related experiments. For more information, please consult technical personnel.

Products Images



Western blot analysis of lysates from A431 cells, primary antibody was diluted at 1:1000, 4° over night