



# KLOT Polyclonal Antibody

<b>Catalog No</b>	BYab-07813
<b>Isotype</b>	IgG
<b>Reactivity</b>	Human;Mouse;Rat
<b>Applications</b>	WB;ELISA
<b>Gene Name</b>	KL
<b>Protein Name</b>	Klotho (EC 3.2.1.31) [Cleaved into: Klotho peptide]
<b>Immunogen</b>	Synthesized peptide derived from part region of human protein AA range: 400-500
<b>Specificity</b>	KLOT Polyclonal Antibody detects endogenous levels of protein.
<b>Formulation</b>	Liquid in PBS containing 50% glycerol, and 0.02% sodium azide.
<b>Source</b>	Polyclonal, Rabbit,IgG
<b>Purification</b>	The antibody was affinity-purified from rabbit antiserum by affinity-chromatography using epitope-specific immunogen.
<b>Dilution</b>	WB 1:500-2000 ELISA 1:5000-20000
<b>Concentration</b>	1 mg/ml
<b>Purity</b>	≥90%
<b>Storage Stability</b>	-20°C/1 year
<b>Synonyms</b>	
<b>Observed Band</b>	111kD
<b>Cell Pathway</b>	[Isoform 1]: Cell membrane ; Single-pass type I membrane protein . Apical cell membrane ; Single-pass type I membrane protein . Isoform 1 shedding leads to a soluble peptide. .; [Isoform 2]: Secreted .; [Klotho peptide]: Secreted .
<b>Tissue Specificity</b>	Present in cortical renal tubules (at protein level). Soluble peptide is present in serum and cerebrospinal fluid. Expressed in kidney, placenta, small intestine and prostate. Down-regulated in renal cell carcinomas, hepatocellular carcinomas, and in chronic renal failure kidney.
<b>Function</b>	catalytic activity:A beta-D-glucuronoside + H(2)O = D-glucuronate + an alcohol .,disease:Defects in KL may be a cause of chronic renal failure complications .,domain:Contains 2 glycosyl hydrolase 1 regions. However, the first region lacks the essential Glu active site residue at position 239, and the second one lacks the essential Glu active site residue at position 872 .,function:May have weak glycosidase activity towards glucuronylated steroids. However, it lacks essential active site Glu residues at positions 239 and 872, suggesting it may be inactive as a glycosidase in vivo. May be involved in the regulation of calcium and

Nanjing BYabscience technology Co.,Ltd



phosphorus homeostasis by inhibiting the synthesis of active vitamin D.,function:The Klotho peptide generated by cleavage of the membrane-bound isoform may be an anti-aging circulating hormone which would extend life span by inhibiting insulin/IGF1 signaling.,online

### Background

This gene encodes a type-I membrane protein that is related to beta-glucosidases. Reduced production of this protein has been observed in patients with chronic renal failure (CRF), and this may be one of the factors underlying the degenerative processes (e.g., arteriosclerosis, osteoporosis, and skin atrophy) seen in CRF. Also, mutations within this protein have been associated with ageing and bone loss. [provided by RefSeq, Jul 2008],

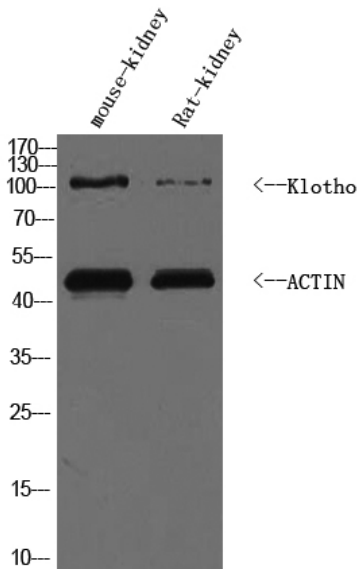
### matters needing attention

Avoid repeated freezing and thawing!

### Usage suggestions

This product can be used in immunological reaction related experiments. For more information, please consult technical personnel.

## Products Images



Western Blot analysis of mouse kidney, rat kidney, HuvEc cell lysis. Primary Antibody was diluted at 1:1000. Secondary antibody(catalog#:RS0002 was diluted at 1:10000