



GSTM2 Polyclonal Antibody

| | |
|---------------------------|---|
| Catalog No | BYab-07805 |
| Isotype | IgG |
| Reactivity | Human;Rat;Mouse; |
| Applications | WB;ELISA |
| Gene Name | GSTM2 GST4 |
| Protein Name | Glutathione S-transferase Mu 2 (EC 2.5.1.18) (GST class-mu 2) (GSTM2-2) |
| Immunogen | Synthesized peptide derived from part region of human protein |
| Specificity | GSTM2 Polyclonal Antibody detects endogenous levels of protein. |
| Formulation | Liquid in PBS containing 50% glycerol, and 0.02% sodium azide. |
| Source | Polyclonal, Rabbit,IgG |
| Purification | The antibody was affinity-purified from rabbit antiserum by affinity-chromatography using epitope-specific immunogen. |
| Dilution | WB 1:500-2000 ELISA 1:5000-20000 |
| Concentration | 1 mg/ml |
| Purity | ≥90% |
| Storage Stability | -20°C/1 year |
| Synonyms | |
| Observed Band | 23kD |
| Cell Pathway | Cytoplasm. |
| Tissue Specificity | Muscle. |
| Function | catalytic activity:RX + glutathione = HX + R-S-glutathione.,function:Conjugation of reduced glutathione to a wide number of exogenous and endogenous hydrophobic electrophiles.,similarity:Belongs to the GST superfamily. Mu family.,similarity:Contains 1 GST C-terminal domain.,similarity:Contains 1 GST N-terminal domain.,subunit:Homodimer.,tissue specificity:Muscle., |
| Background | Cytosolic and membrane-bound forms of glutathione S-transferase are encoded by two distinct supergene families. At present, eight distinct classes of the soluble cytoplasmic mammalian glutathione S-transferases have been identified: alpha, kappa, mu, omega, pi, sigma, theta and zeta. This gene encodes a glutathione S-transferase that belongs to the mu class. The mu class of enzymes functions in the detoxification of electrophilic compounds, including carcinogens, therapeutic |

Nanjing BYabscience technology Co.,Ltd



drugs, environmental toxins and products of oxidative stress, by conjugation with glutathione. The genes encoding the mu class of enzymes are organized in a gene cluster on chromosome 1p13.3 and are known to be highly polymorphic. These genetic variations can change an individual's susceptibility to carcinogens and toxins as well as affect the toxicity and efficacy of certain drugs. [provided by RefSeq, Jul 2008],

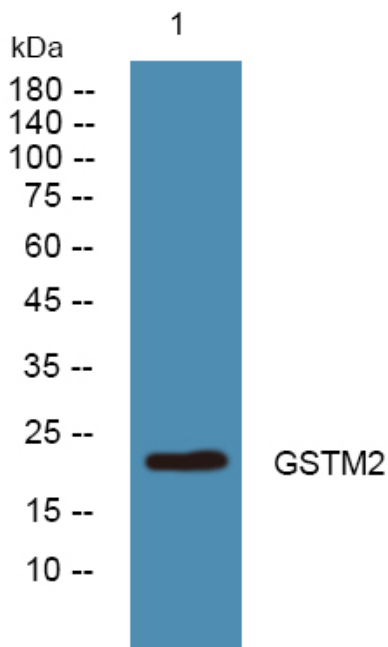
matters needing attention

Avoid repeated freezing and thawing!

Usage suggestions

This product can be used in immunological reaction related experiments. For more information, please consult technical personnel.

Products Images



Western blot analysis of lysates from K562 cells, primary antibody was diluted at 1:1000, 4° over night