



LRIG1 Polyclonal Antibody

Catalog No	BYab-07751
Isotype	IgG
Reactivity	Human;Mouse
Applications	WB;ELISA
Gene Name	LRIG1 LIG1
Protein Name	Leucine-rich repeats and immunoglobulin-like domains protein 1 (LIG-1)
Immunogen	Synthesized peptide derived from part region of human protein
Specificity	LRIG1 Polyclonal Antibody detects endogenous levels of protein.
Formulation	Liquid in PBS containing 50% glycerol, and 0.02% sodium azide.
Source	Polyclonal, Rabbit,IgG
Purification	The antibody was affinity-purified from rabbit antiserum by affinity-chromatography using epitope-specific immunogen.
Dilution	WB 1:500-2000 ELISA 1:5000-20000
Concentration	1 mg/ml
Purity	≥90%
Storage Stability	-20°C/1 year
Synonyms	
Observed Band	120kD
Cell Pathway	Cell membrane ; Single-pass type I membrane protein .
Tissue Specificity	Widely expressed.
Function	domain:The LRRs and the Ig-domains are each sufficient for EGFR/ERBB1 binding. This interaction is abolished only when these two domains are deleted.,function:Act as a feedback negative regulator of signaling by receptor tyrosine kinases, through a mechanism that involves enhancement of receptor ubiquitination and accelerated intracellular degradation.,induction:By EGF.,similarity:Contains 17 LRR (leucine-rich) repeats.,similarity:Contains 3 Ig-like C2-type (immunoglobulin-like) domains.,subunit:Interacts with EGFR/ERBB1, ERBB2, ERBB3 and ERBB4.,tissue specificity:Widely expressed.,
Background	domain:The LRRs and the Ig-domains are each sufficient for EGFR/ERBB1 binding. This interaction is abolished only when these two domains are deleted.,function:Act as a feedback negative regulator of signaling by receptor

Nanjing BYabscience technology Co.,Ltd



tyrosine kinases, through a mechanism that involves enhancement of receptor ubiquitination and accelerated intracellular degradation.,induction:By EGF.,similarity:Contains 17 LRR (leucine-rich) repeats.,similarity:Contains 3 Ig-like C2-type (immunoglobulin-like) domains.,subunit:Interacts with EGFR/ERBB1, ERBB2, ERBB3 and ERBB4.,tissue specificity:Widely expressed.,

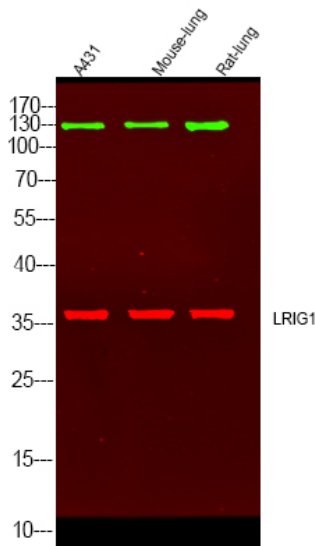
matters needing attention

Avoid repeated freezing and thawing!

Usage suggestions

This product can be used in immunological reaction related experiments. For more information, please consult technical personnel.

Products Images



Western Blot analysis of various cell lysis. Primary Antibody was diluted at 1:1000. Secondary antibody(catalog#:RS23920 was diluted at 1:10000