



HLAG Polyclonal Antibody

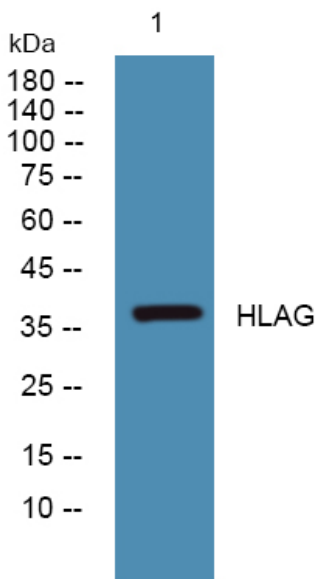
Catalog No	BYab-07744
Isotype	IgG
Reactivity	Human
Applications	WB;ELISA
Gene Name	HLA-G HLA-6.0 HLAG
Protein Name	HLA class I histocompatibility antigen, alpha chain G (HLA G antigen) (MHC class I antigen G)
Immunogen	Synthesized peptide derived from part region of human protein
Specificity	HLAG Polyclonal Antibody detects endogenous levels of protein.
Formulation	Liquid in PBS containing 50% glycerol, and 0.02% sodium azide.
Source	Polyclonal, Rabbit,IgG
Purification	The antibody was affinity-purified from rabbit antiserum by affinity-chromatography using epitope-specific immunogen.
Dilution	WB 1:500-2000 ELISA 1:5000-20000
Concentration	1 mg/ml
Purity	≥90%
Storage Stability	-20°C/1 year
Synonyms	
Observed Band	37kD
Cell Pathway	[Isoform 1]: Cell membrane ; Single-pass type I membrane protein . Endoplasmic reticulum membrane . Early endosome membrane . ; [Soluble HLA class I histocompatibility antigen, alpha chain G]: Secreted . ; [Isoform 2]: Cell membrane ; Single-pass type I membrane protein . ; [Isoform 3]: Cell membrane ; Single-pass type I membrane protein . ; [Isoform 4]: Cell membrane ; Single-pass type I membrane protein . ; [Isoform 5]: Secreted . Early endosome . ; [Isoform 6]: Secreted . ; [Isoform 7]: Secreted . ; Cell projection, filopodium membrane . HLA-G trogocytosis from extravillous trophoblast's filopodia occurs in the majority of decidual NK cells. .
Tissue Specificity	Expressed in adult eye (PubMed:1570318). Expressed in immune cell subsets including monocytes, myeloid and plasmacytoid dendritic cells and regulatory T cells (Tr1)(at protein level) (PubMed:20448110). Secreted by follicular dendritic cell and follicular helper T cells (PubMed:24453251). Isoform 5: Detected in physiological fluids including amniotic fluid and serum (PubMed:11137219). Isoform 7: Expressed in placenta, amniotic membrane, skin cord blood and peripheral blood mononuclear cells (PubMed:11137219).

Nanjing BYabscience technology Co.,Ltd



Function	function:Involved in the presentation of foreign antigens to the immune system.,similarity:Belongs to the MHC class I family.,similarity:Contains 1 Ig-like C1-type (immunoglobulin-like) domain.,subunit:Heterodimer of an alpha chain and a beta chain (beta-2-microglobulin),,tissue specificity:Expression of HLAG seems to be restricted to eye cells and tissue.,
Background	HLA-G belongs to the HLA class I heavy chain paralogues. This class I molecule is a heterodimer consisting of a heavy chain and a light chain (beta-2 microglobulin). The heavy chain is anchored in the membrane. HLA-G is expressed on fetal derived placental cells. The heavy chain is approximately 45 kDa and its gene contains 8 exons. Exon one encodes the leader peptide, exons 2 and 3 encode the alpha1 and alpha2 domain, which both bind the peptide, exon 4 encodes the alpha3 domain, exon 5 encodes the transmembrane region, and exon 6 encodes the cytoplasmic tail. [provided by RefSeq, Jul 2008],
matters needing attention	Avoid repeated freezing and thawing!
Usage suggestions	This product can be used in immunological reaction related experiments. For more information, please consult technical personnel.

Products Images



Nanjing BYabscience technology Co.,Ltd