



FKB1A Polyclonal Antibody

Catalog No	BYab-07742
Isotype	IgG
Reactivity	Human;Mouse;Rat
Applications	WB;ELISA
Gene Name	FKBP1A FKBP1 FKBP12
Protein Name	Peptidyl-prolyl cis-trans isomerase FKBP1A (PPIase FKBP1A) (EC 5.2.1.8) (12 kDa FK506-binding protein) (12 kDa FKBP) (FKBP-12) (Calstabin-1) (FK506-binding protein 1A) (FKBP-1A) (Immunophilin FKBP12)
Immunogen	Synthesized peptide derived from part region of human protein AA range: 1-50
Specificity	FKB1A Polyclonal Antibody detects endogenous levels of protein.
Formulation	Liquid in PBS containing 50% glycerol, and 0.02% sodium azide.
Source	Polyclonal, Rabbit,IgG
Purification	The antibody was affinity-purified from rabbit antiserum by affinity-chromatography using epitope-specific immunogen.
Dilution	WB 1:500-2000 ELISA 1:5000-20000
Concentration	1 mg/ml
Purity	≥90%
Storage Stability	-20°C/1 year
Synonyms	
Observed Band	11kD
Cell Pathway	Cytoplasm, cytosol . Sarcoplasmic reticulum membrane ; Peripheral membrane protein ; Cytoplasmic side .
Tissue Specificity	Lung,PCR rescued clones,Placenta,Platelet,
Function	catalytic activity:Peptidylproline (omega=180) = peptidylproline (omega=0).,enzyme regulation:Inhibited by both FK506 and rapamycin.,function:May play a role in modulation of ryanodine receptor isoform-1 (RYR-1), a component of the calcium release channel of skeletal muscle sarcoplasmic reticulum. There are four molecules of FKBP12 per skeletal muscle RYR. PPIases accelerate the folding of proteins. It catalyzes the cis-trans isomerization of proline imidic peptide bonds in oligopeptides.,similarity:Belongs to the FKBP-type PPIase family.,similarity:Belongs to the FKBP-type PPIase family. FKBP1 subfamily.,similarity:Contains 1 PPIase FKBP-type domain.,

Nanjing BYabscience technology Co.,Ltd



Background

The protein encoded by this gene is a member of the immunophilin protein family, which play a role in immunoregulation and basic cellular processes involving protein folding and trafficking. The protein is a cis-trans prolyl isomerase that binds the immunosuppressants FK506 and rapamycin. It interacts with several intracellular signal transduction proteins including type I TGF-beta receptor. It also interacts with multiple intracellular calcium release channels, and coordinates multi-protein complex formation of the tetrameric skeletal muscle ryanodine receptor. In mouse, deletion of this homologous gene causes congenital heart disorder known as noncompaction of left ventricular myocardium. Multiple alternatively spliced variants, encoding the same protein, have been identified. The human genome contains five pseudogenes related to this gene, at least one of which is transcribed. [provided b

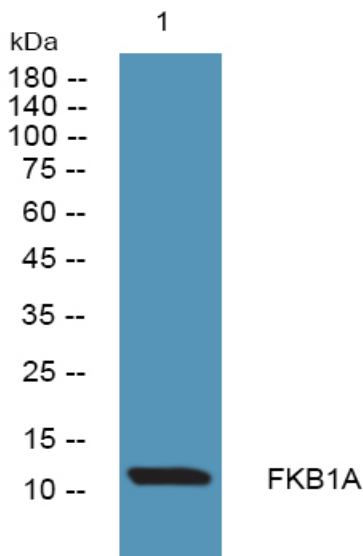
matters needing attention

Avoid repeated freezing and thawing!

Usage suggestions

This product can be used in immunological reaction related experiments. For more information, please consult technical personnel.

Products Images



Western blot analysis of lysates from KB cells, primary antibody was diluted at 1:1000, 4° over night