



FAT2 Polyclonal Antibody

Catalog No	BYab-07741
Isotype	IgG
Reactivity	Human;Mouse;Rat
Applications	IHC;IF
Gene Name	FAT2 CDHF8 KIAA0811 MEGF1
Protein Name	Protocadherin Fat 2 (hFat2) (Cadherin family member 8) (Multiple epidermal growth factor-like domains protein 1) (Multiple EGF-like domains protein 1)
Immunogen	Synthesized peptide derived from part region of human protein
Specificity	FAT2 Polyclonal Antibody detects endogenous levels of protein.
Formulation	Liquid in PBS containing 50% glycerol, and 0.02% sodium azide.
Source	Polyclonal, Rabbit,IgG
Purification	The antibody was affinity-purified from rabbit antiserum by affinity-chromatography using epitope-specific immunogen.
Dilution	IHC-p 1:50-300. IF 1:50-200
Concentration	1 mg/ml
Purity	≥90%
Storage Stability	-20°C/1 year
Synonyms	
Observed Band	478kD
Cell Pathway	Cell membrane ; Single-pass type I membrane protein . Cell junction . Golgi apparatus, trans-Golgi network . Localized at adhesion zippers (early state of adherens junctions) of keratinocytes. .
Tissue Specificity	Expressed in epidermal keratinocytes, infant brain, cerebellum, and also in a variety of tumors, such as pancreatic cancer, diffuse type gastric cancer, ovarian cancer, esophageal cancer, skin squamous cell carcinoma, head and neck cancer. Not expressed in melanoma cell line A375 cells, normal epidermal melanocytes or normal dermal fibroblasts. Expressed in epidermal keratinocytes and squamous cell carcinoma (at protein level).
Function	similarity:Contains 1 laminin G-like domain.,similarity:Contains 2 EGF-like domains.,similarity:Contains 32 cadherin domains.,
Background	This gene is the second identified human homolog of the Drosophila fat gene, which encodes a tumor suppressor essential for controlling cell proliferation during Drosophila development. The gene product is a member of the cadherin superfamily, a group of integral membrane proteins characterized by the presence

Nanjing BYabscience technology Co.,Ltd



of cadherin-type repeats. In addition to containing 34 tandem cadherin-type repeats, the gene product has two epidermal growth factor (EGF)-like repeats and one laminin G domain. This protein most likely functions as a cell adhesion molecule, controlling cell proliferation and playing an important role in cerebellum development. [provided by RefSeq, Jul 2008],

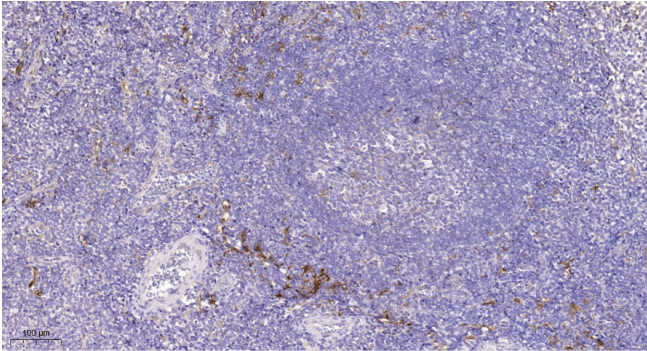
matters needing attention

Avoid repeated freezing and thawing!

Usage suggestions

This product can be used in immunological reaction related experiments. For more information, please consult technical personnel.

Products Images



Immunohistochemical analysis of paraffin-embedded human tonsil. 1, Tris-EDTA,pH9.0 was used for antigen retrieval. 2 Antibody was diluted at 1:200(4° overnight).3,Secondary antibody was diluted at 1:200(room temperature, 45min).