



# PMVK Polyclonal Antibody

<b>Catalog No</b>	BYab-07719
<b>Isotype</b>	IgG
<b>Reactivity</b>	Human;Rat;Mouse;
<b>Applications</b>	WB;ELISA
<b>Gene Name</b>	PMVK PMKI
<b>Protein Name</b>	Phosphomevalonate kinase (PMKase) (hPMK) (EC 2.7.4.2)
<b>Immunogen</b>	Synthesized peptide derived from part region of human protein
<b>Specificity</b>	PMVK Polyclonal Antibody detects endogenous levels of protein.
<b>Formulation</b>	Liquid in PBS containing 50% glycerol, and 0.02% sodium azide.
<b>Source</b>	Polyclonal, Rabbit,IgG
<b>Purification</b>	The antibody was affinity-purified from rabbit antiserum by affinity-chromatography using epitope-specific immunogen.
<b>Dilution</b>	WB 1:500-2000 ELISA 1:5000-20000
<b>Concentration</b>	1 mg/ml
<b>Purity</b>	≥90%
<b>Storage Stability</b>	-20°C/1 year
<b>Synonyms</b>	
<b>Observed Band</b>	21kD
<b>Cell Pathway</b>	Cytoplasm, cytosol .
<b>Tissue Specificity</b>	Heart, liver, skeletal muscle, kidney, and pancreas. Lower level in brain, placenta and lung.
<b>Function</b>	catalytic activity:ATP + (R)-5-phosphomevalonate = ADP + (R)-5-diphosphomevalonate.,induction:By sterol.,pathway:Isoprenoid biosynthesis; isopentenyl-PP biosynthesis via mevalonic acid pathway; isopentenyl-PP from (R)-mevalonic acid: step 2/3.,subunit:Monomer.,tissue specificity:Heart, liver, skeletal muscle, kidney, and pancreas. Lower level in brain, placenta, and lung.,
<b>Background</b>	This gene encodes a peroxisomal enzyme that catalyzes the conversion of mevalonate 5-phosphate into mevalonate 5-diphosphate, the fifth reaction of the cholesterol biosynthetic pathway. Studies in rat show that the message level and the enzyme activity of this protein is regulated by sterol, and that this regulation is coordinated with 3-hydroxy-3-methylglutaryl coenzyme A reductase, the

Nanjing BYabscience technology Co.,Ltd



rate-limiting enzyme of cholesterol biosynthesis. [provided by RefSeq, Sep 2011],

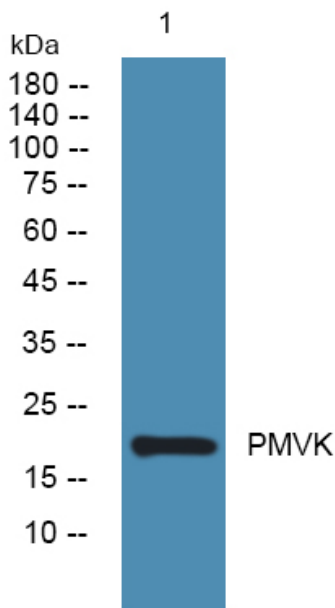
**matters needing attention**

Avoid repeated freezing and thawing!

**Usage suggestions**

This product can be used in immunological reaction related experiments. For more information, please consult technical personnel.

## Products Images



Western blot analysis of lysates from KB cells, primary antibody was diluted at 1:1000, 4° over night