



ABI3 Polyclonal Antibody

Catalog No	BYab-07700
Isotype	IgG
Reactivity	Human;Mouse
Applications	WB;ELISA
Gene Name	ABI3 NESH
Protein Name	ABI gene family member 3 (New molecule including SH3) (Nesh)
Immunogen	Synthesized peptide derived from part region of human protein AA range: 286-336
Specificity	ABI3 Polyclonal Antibody detects endogenous levels of protein.
Formulation	Liquid in PBS containing 50% glycerol, and 0.02% sodium azide.
Source	Polyclonal, Rabbit,IgG
Purification	The antibody was affinity-purified from rabbit antiserum by affinity-chromatography using epitope-specific immunogen.
Dilution	WB 1:500-2000 ELISA 1:5000-20000
Concentration	1 mg/ml
Purity	≥90%
Storage Stability	-20°C/1 year
Synonyms	
Observed Band	40kD
Cell Pathway	Cytoplasm . Colocalizes with PAK2 at leading edge of cells.
Tissue Specificity	Expressed in heart, lung, liver, pancreas, kidney, placenta and at low levels in brain and skeletal muscle.
Function	function:May inhibit tumor metastasis (By similarity). In vitro, reduces cell motility.,similarity:Belongs to the ABI family.,similarity:Contains 1 SH3 domain.,subcellular location:Colocalizes with PAK2 at leading edge of cells.,subunit:May interact with PAK1 and PAK2. Probably interacts with TARSH.,tissue specificity:Expressed in heart, lung, liver, pancreas, kidney, placenta and at low levels in brain and skeletal muscle.,
Background	This gene encodes a member of an adaptor protein family. Members of this family encode proteins containing a homeobox homology domain, proline rich region and Src-homology 3 (SH3) domain, and are components of the Abi/WAVE complex which regulates actin polymerization. The encoded protein inhibits

Nanjing BYabscience technology Co.,Ltd



ectopic metastasis of tumor cells as well as cell migration. This may be accomplished through interaction with p21-activated kinase. Alternative splicing results in multiple transcript variants. [provided by RefSeq, Sep 2013],

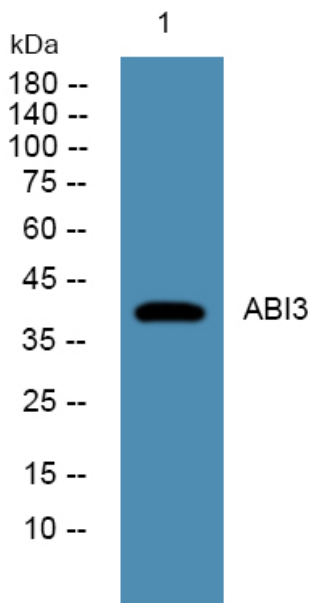
matters needing attention

Avoid repeated freezing and thawing!

Usage suggestions

This product can be used in immunological reaction related experiments. For more information, please consult technical personnel.

Products Images



Western blot analysis of lysates from PC12 cells, primary antibody was diluted at 1:1000, 4° over night