



CD8B Polyclonal Antibody

Catalog No	BYab-07693
Isotype	IgG
Reactivity	Human;Rat;Mouse;
Applications	WB;ELISA
Gene Name	CD8B CD8B1
Protein Name	T-cell surface glycoprotein CD8 beta chain (CD antigen CD8b)
Immunogen	Synthesized peptide derived from part region of human protein
Specificity	CD8B Polyclonal Antibody detects endogenous levels of protein.
Formulation	Liquid in PBS containing 50% glycerol, and 0.02% sodium azide.
Source	Polyclonal, Rabbit,IgG
Purification	The antibody was affinity-purified from rabbit antiserum by affinity-chromatography using epitope-specific immunogen.
Dilution	WB 1:500-2000 ELISA 1:5000-20000
Concentration	1 mg/ml
Purity	≥90%
Storage Stability	-20°C/1 year
Synonyms	
Observed Band	23kD
Cell Pathway	[Isoform 1]: Cell membrane ; Single-pass type I membrane protein . Requires the partner CD8A for efficient cell surface expression (PubMed:3145196). The heterodimer CD8A/CD8B localizes to lipid rafts due to CD8B cytoplasmic tail palmitoylation. . ; [Isoform 2]: Cell membrane ; Single-pass type I membrane protein . ; [Isoform 3]: Secreted . ; [Isoform 4]: Cell membrane ; Single-pass type I membrane protein . ; [Isoform 5]: Cell membrane ; Single-pass type I membrane protein . ; [Isoform 6]: Secreted . ; [Isoform 7]: Secreted . ; [Isoform 8]: Secreted .
Tissue Specificity	Isoform 1, isoform 3, isoform 5, isoform 6, isoform 7 and isoform 8 are expressed in both thymus and peripheral CD8+ T-cells. Expression of isoform 1 is higher in thymus CD8+ T-cells than in peripheral CD8+ T-cells. Expression of isoform 6 is higher in peripheral CD8+ T-cells than in thymus CD8+ T-cells.
Function	function:Identifies cytotoxic/suppressor T-cells that interact with MHC class I bearing targets. CD8 is thought to play a role in the process of T-cell mediated killing.,online information:CD8 entry,PTM:Phosphorylated as a consequence of T-cell activation .,similarity:Contains 1 Ig-like V-type (immunoglobulin-like)

Nanjing BYabscience technology Co.,Ltd



domain.,subunit:In general heterodimer of an alpha and a beta chain linked by two disulfide bonds.,

Background

The CD8 antigen is a cell surface glycoprotein found on most cytotoxic T lymphocytes that mediates efficient cell-cell interactions within the immune system. The CD8 antigen, acting as a coreceptor, and the T-cell receptor on the T lymphocyte recognize antigens displayed by an antigen presenting cell (APC) in the context of class I MHC molecules. The functional coreceptor is either a homodimer composed of two alpha chains, or a heterodimer composed of one alpha and one beta chain. Both alpha and beta chains share significant homology to immunoglobulin variable light chains. This gene encodes the CD8 beta chain isoforms. Multiple alternatively spliced transcript variants encoding distinct membrane associated or secreted isoforms have been described. A pseudogene, also located on chromosome 2, has been identified. [provided by RefSeq, May 2010],

matters needing attention

Avoid repeated freezing and thawing!

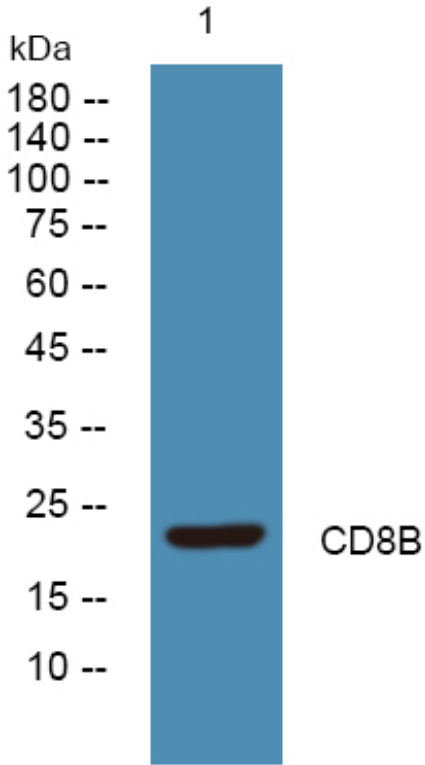
Usage suggestions

This product can be used in immunological reaction related experiments. For more information, please consult technical personnel.

Nanjing BYabscience technology Co.,Ltd



Products Images



Western blot analysis of lysates from K562 cells,
primary antibody was diluted at 1:1000, 4° over night