



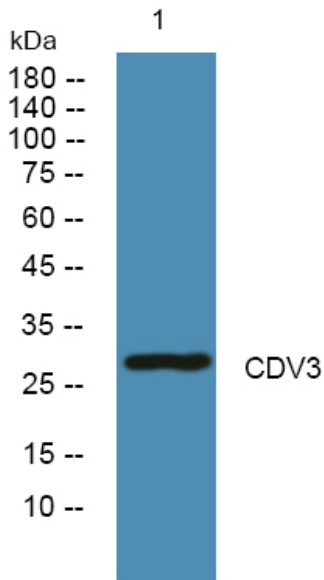
CDV3 Polyclonal Antibody

Catalog No	BYab-07662
Isotype	IgG
Reactivity	Human;Rat;Mouse;
Applications	WB;ELISA
Gene Name	CDV3 H41
Protein Name	Protein CDV3 homolog
Immunogen	Synthesized peptide derived from part region of human protein AA range: 205-255
Specificity	CDV3 Polyclonal Antibody detects endogenous levels of protein.
Formulation	Liquid in PBS containing 50% glycerol, and 0.02% sodium azide.
Source	Polyclonal, Rabbit,IgG
Purification	The antibody was affinity-purified from rabbit antiserum by affinity-chromatography using epitope-specific immunogen.
Dilution	WB 1:500-2000 ELISA 1:5000-20000
Concentration	1 mg/ml
Purity	≥90%
Storage Stability	-20°C/1 year
Synonyms	
Observed Band	28kD
Cell Pathway	Cytoplasm .
Tissue Specificity	Expression levels correlate with those of HER-2/neu in breast cancer cells.
Function	similarity:Belongs to the CDV3 family.,tissue specificity:Expression levels correlate with those of HER-2/neu in breast cancer cells.,
Background	similarity:Belongs to the CDV3 family.,tissue specificity:Expression levels correlate with those of HER-2/neu in breast cancer cells.,
matters needing attention	Avoid repeated freezing and thawing!
Usage suggestions	This product can be used in immunological reaction related experiments. For more information, please consult technical personnel.

Nanjing BYabscience technology Co.,Ltd



Products Images



Western blot analysis of lysates from SH-SY5Y cells,
primary antibody was diluted at 1:1000, 4° over night