



TAAR8 Polyclonal Antibody

Catalog No	BYab-07640
Isotype	IgG
Reactivity	Human;Rat;Mouse;
Applications	WB;ELISA
Gene Name	TAAR8 GPR102 TA5 TAR5 TRAR5
Protein Name	Trace amine-associated receptor 8 (TaR-8) (Trace amine receptor 8) (G-protein coupled receptor 102) (Trace amine receptor 5) (TaR-5)
Immunogen	Synthesized peptide derived from human protein . at AA range: 110-190
Specificity	TAAR8 Polyclonal Antibody detects endogenous levels of protein.
Formulation	Liquid in PBS containing 50% glycerol, and 0.02% sodium azide.
Source	Polyclonal, Rabbit,IgG
Purification	The antibody was affinity-purified from rabbit antiserum by affinity-chromatography using epitope-specific immunogen.
Dilution	WB 1:500-2000 ELISA 1:5000-20000
Concentration	1 mg/ml
Purity	≥90%
Storage Stability	-20°C/1 year
Synonyms	
Observed Band	37kD
Cell Pathway	Cell membrane; Multi-pass membrane protein.
Tissue Specificity	Expressed in kidney and amygdala. Not expressed in other tissues or brain regions tested.
Function	function:Orphan receptor. Could be a receptor for trace amines. Trace amines are biogenic amines present in very low levels in mammalian tissues. Although some trace amines have clearly defined roles as neurotransmitters in invertebrates, the extent to which they function as true neurotransmitters in vertebrates has remained speculative. Trace amines are likely to be involved in a variety of physiological functions that have yet to be fully understood.,similarity:Belongs to the G-protein coupled receptor 1 family.,tissue specificity:Expressed in kidney and amygdala. Not expressed in other tissues or brain regions tested.,
Background	This gene is part of the trace amine receptor cluster on chromosome 6 and encodes an orphan G-protein coupled receptor. Upregulated expression of this gene in astroglial cells upon exposure to lipopolysaccharides suggests a function

Nanjing BYabscience technology Co.,Ltd



for the encoded protein in the brain. [provided by RefSeq, Jul 2016],

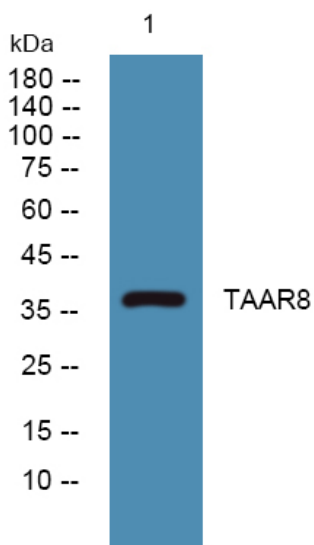
matters needing attention

Avoid repeated freezing and thawing!

Usage suggestions

This product can be used in immunological reaction related experiments. For more information, please consult technical personnel.

Products Images



Western blot analysis of lysates from K562 cells, primary antibody was diluted at 1:1000, 4° over night