



# MC3R Polyclonal Antibody

<b>Catalog No</b>	BYab-07563
<b>Isotype</b>	IgG
<b>Reactivity</b>	Human;Rat;Mouse
<b>Applications</b>	WB;ELISA
<b>Gene Name</b>	MC3R
<b>Protein Name</b>	Melanocortin receptor 3 (MC3-R)
<b>Immunogen</b>	Synthesized peptide derived from human protein . at AA range: 280-360
<b>Specificity</b>	MC3R Polyclonal Antibody detects endogenous levels of protein.
<b>Formulation</b>	Liquid in PBS containing 50% glycerol, and 0.02% sodium azide.
<b>Source</b>	Polyclonal, Rabbit,IgG
<b>Purification</b>	The antibody was affinity-purified from rabbit antiserum by affinity-chromatography using epitope-specific immunogen.
<b>Dilution</b>	WB 1:500-2000 ELISA 1:5000-20000
<b>Concentration</b>	1 mg/ml
<b>Purity</b>	≥90%
<b>Storage Stability</b>	-20°C/1 year
<b>Synonyms</b>	
<b>Observed Band</b>	35kD
<b>Cell Pathway</b>	Cell membrane; Multi-pass membrane protein.
<b>Tissue Specificity</b>	Brain, placental, and gut tissues.
<b>Function</b>	function:Receptor for MSH (alpha, beta and gamma) and ACTH. This receptor is mediated by G proteins which activate adenylate cyclase.,polymorphism:Genetic variations in MC3R define the body mass index quantitative trait locus 9 (BMIQ9) [MIM:602025]. Variance in body mass index is a susceptibility factor for obesity.,similarity:Belongs to the G-protein coupled receptor 1 family.,tissue specificity:Brain, placental, and gut tissues.,
<b>Background</b>	This gene encodes a G-protein-coupled receptor for melanocyte-stimulating hormone and adrenocorticotrophic hormone that is expressed in tissues other than the adrenal cortex and melanocytes. This gene maps to the same region as the locus for benign neonatal epilepsy. Mice deficient for this gene have increased fat mass despite decreased food intake, suggesting a role for this gene product in the

Nanjing BYabscience technology Co.,Ltd



regulation of energy homeostasis. Mutations in this gene are associated with a susceptibility to obesity in humans. [provided by RefSeq, Jul 2008],

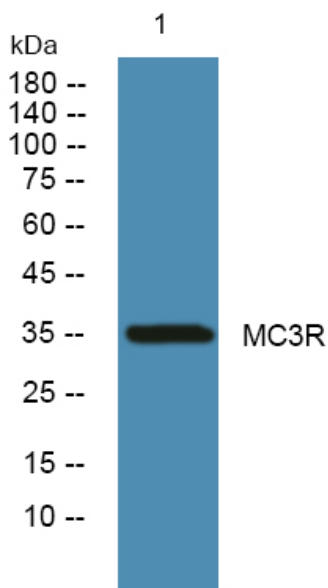
**matters needing attention**

Avoid repeated freezing and thawing!

**Usage suggestions**

This product can be used in immunological reaction related experiments. For more information, please consult technical personnel.

## Products Images



Western blot analysis of lysates from PC12 cells, primary antibody was diluted at 1:1000, 4° over night