



LT4R2 Polyclonal Antibody

Catalog No	BYab-07562
Isotype	IgG
Reactivity	Human;Rat;Mouse
Applications	WB;ELISA
Gene Name	LTB4R2 BLT2R BLTR2
Protein Name	Leukotriene B4 receptor 2 (LTB4-R 2) (LTB4-R2) (LTB4 receptor JULF2) (Leukotriene B4 receptor BLT2) (Seven transmembrane receptor BLTR2)
Immunogen	Synthesized peptide derived from human protein . at AA range: 290-370
Specificity	LT4R2 Polyclonal Antibody detects endogenous levels of protein.
Formulation	Liquid in PBS containing 50% glycerol, and 0.02% sodium azide.
Source	Polyclonal, Rabbit,IgG
Purification	The antibody was affinity-purified from rabbit antiserum by affinity-chromatography using epitope-specific immunogen.
Dilution	WB 1:500-2000 ELISA 1:5000-20000
Concentration	1 mg/ml
Purity	≥90%
Storage Stability	-20°C/1 year
Synonyms	
Observed Band	42kD
Cell Pathway	Cell membrane; Multi-pass membrane protein.
Tissue Specificity	Widely expressed.
Function	caution:It is uncertain whether Met-1 or Met-32 is the initiator.,function:Low-affinity receptor for leukotrienes including leukotriene B4. Mediates chemotaxis of granulocytes and macrophages. The response is mediated via G-proteins that activate a phosphatidylinositol-calcium second messenger system. The rank order of affinities for the leukotrienes is LTB4 > 12-epi-LTB4 > LTB5 > LTB3.,similarity:Belongs to the G-protein coupled receptor 1 family.,tissue specificity:Widely expressed.,
Background	caution:It is uncertain whether Met-1 or Met-32 is the initiator.,function:Low-affinity receptor for leukotrienes including leukotriene B4. Mediates chemotaxis of granulocytes and macrophages. The response is mediated via G-proteins that activate a phosphatidylinositol-calcium second messenger system. The rank order

Nanjing BYabscience technology Co.,Ltd



of affinities for the leukotrienes is LTB₄ > 12-epi-LTB₄ > LTB₅ > LTB₃.,similarity:Belongs to the G-protein coupled receptor 1 family.,tissue specificity:Widely expressed.,

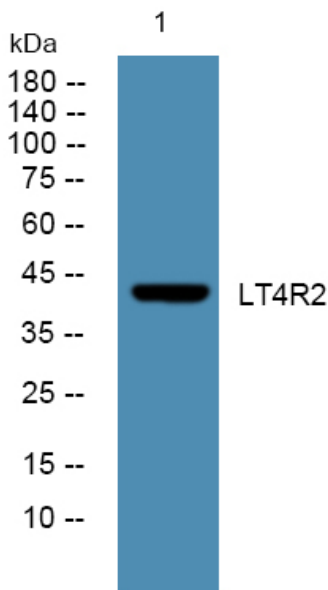
matters needing attention

Avoid repeated freezing and thawing!

Usage suggestions

This product can be used in immunological reaction related experiments. For more information, please consult technical personnel.

Products Images



Western blot analysis of lysates from K562 cells, primary antibody was diluted at 1:1000, 4° over night