



# TA2R Polyclonal Antibody

<b>Catalog No</b>	BYab-07546
<b>Isotype</b>	IgG
<b>Reactivity</b>	Human;Rat;Mouse
<b>Applications</b>	WB;ELISA
<b>Gene Name</b>	TBXA2R
<b>Protein Name</b>	Thromboxane A2 receptor (TXA2-R) (Prostanoid TP receptor)
<b>Immunogen</b>	Synthesized peptide derived from human protein . at AA range: 230-310
<b>Specificity</b>	TA2R Polyclonal Antibody detects endogenous levels of protein.
<b>Formulation</b>	Liquid in PBS containing 50% glycerol, and 0.02% sodium azide.
<b>Source</b>	Polyclonal, Rabbit,IgG
<b>Purification</b>	The antibody was affinity-purified from rabbit antiserum by affinity-chromatography using epitope-specific immunogen.
<b>Dilution</b>	WB 1:500-2000 ELISA 1:5000-20000
<b>Concentration</b>	1 mg/ml
<b>Purity</b>	≥90%
<b>Storage Stability</b>	-20°C/1 year
<b>Synonyms</b>	
<b>Observed Band</b>	37kD
<b>Cell Pathway</b>	Cell membrane; Multi-pass membrane protein.
<b>Tissue Specificity</b>	Blood,Endothelial cell,Lung,PCR rescued clones,Placenta,Platelet,
<b>Function</b>	disease:Defects in TBXA2R are the cause of a dominantly inherited bleeding disorder [MIM:188070].,function:Receptor for thromboxane A2 (TXA2), a potent stimulator of platelet aggregation. The activity of this receptor is mediated by a G-protein that activates a phosphatidylinositol-calcium second messenger system. In the kidney, the binding of TXA2 to glomerular TP receptors causes intense vasoconstriction. Activates phospholipase C. Isoform 1 activates adenylyl cyclase, isoform 2 inhibits adenylyl cyclase.,similarity:Belongs to the G-protein coupled receptor 1 family.,
<b>Background</b>	thromboxane A2 receptor(TBXA2R) Homo sapiens This gene encodes a member of the G protein-coupled receptor family. The protein interacts with thromboxane A2 to induce platelet aggregation and regulate hemostasis. A

Nanjing BYabscience technology Co.,Ltd



mutation in this gene results in a bleeding disorder. Multiple transcript variants encoding different isoforms have been found for this gene. [provided by RefSeq, Oct 2009],

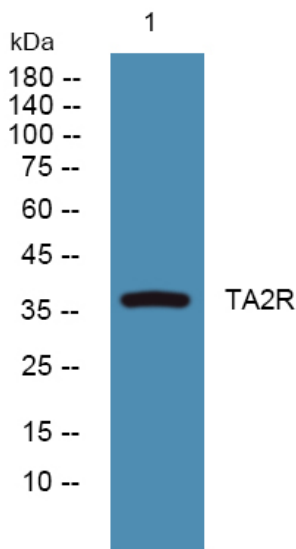
**matters needing attention**

Avoid repeated freezing and thawing!

**Usage suggestions**

This product can be used in immunological reaction related experiments. For more information, please consult technical personnel.

## Products Images



Western blot analysis of lysates from PC12 cells, primary antibody was diluted at 1:1000, 4° over night