



PSYR Polyclonal Antibody

Catalog No	BYab-07538
Isotype	IgG
Reactivity	Human;Mouse
Applications	WB; IF;ELISA
Gene Name	GPR65 TDAG8
Protein Name	Psychosine receptor (G-protein coupled receptor 65) (T-cell death-associated gene 8 protein)
Immunogen	Synthesized peptide derived from human protein . at AA range: 200-280
Specificity	PSYR Polyclonal Antibody detects endogenous levels of protein.
Formulation	Liquid in PBS containing 50% glycerol, and 0.02% sodium azide.
Source	Polyclonal, Rabbit,IgG
Purification	The antibody was affinity-purified from rabbit antiserum by affinity-chromatography using epitope-specific immunogen.
Dilution	WB 1:500-2000; IF/ICC 1:100-500;ELISA 1:5000-20000
Concentration	1 mg/ml
Purity	≥90%
Storage Stability	-20°C/1 year
Synonyms	
Observed Band	37kD
Cell Pathway	Cell membrane ; Multi-pass membrane protein .
Tissue Specificity	Predominantly expressed in thymus, spleen, lymph nodes, small intestine, lung, placenta and peripheral blood leukocytes.
Function	function:Receptor for the glycosphingolipid psychosine (PSY) and several related glycosphingolipids. May have a role in activation-induced cell death or differentiation of T-cells.,similarity:Belongs to the G-protein coupled receptor 1 family.,tissue specificity:Predominantly expressed in thymus, spleen, lymph nodes, small intestine, lung, placenta and peripheral blood leukocytes.,
Background	function:Receptor for the glycosphingolipid psychosine (PSY) and several related glycosphingolipids. May have a role in activation-induced cell death or differentiation of T-cells.,similarity:Belongs to the G-protein coupled receptor 1 family.,tissue specificity:Predominantly expressed in thymus, spleen, lymph nodes, small intestine, lung, placenta and peripheral blood leukocytes.,

Nanjing BYabscience technology Co.,Ltd



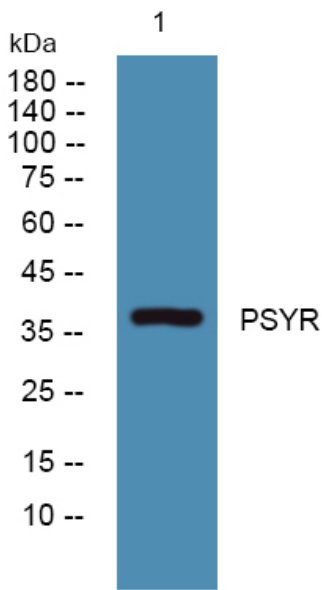
matters needing attention

Avoid repeated freezing and thawing!

Usage suggestions

This product can be used in immunological reaction related experiments. For more information, please consult technical personnel.

Products Images



Western blot analysis of lysates from DU145 cells, primary antibody was diluted at 1:1000, 4° over night