



# P2Y10 Polyclonal Antibody

|                           |   |
|---------------------------|---|
| <b>Catalog No</b>         | BYab-07532  |
| <b>Isotype</b>            | IgG   |
| <b>Reactivity</b>         | Human;Mouse   |
| <b>Applications</b>       | WB;ELISA  |
| <b>Gene Name</b>          | P2RY10  |
| <b>Protein Name</b>       | Putative P2Y purinoceptor 10 (P2Y10) (P2Y-like receptor)  |
| <b>Immunogen</b>          | Synthesized peptide derived from human protein . at AA range: 80-160  |
| <b>Specificity</b>        | P2Y10 Polyclonal Antibody detects endogenous levels of protein.   |
| <b>Formulation</b>        | Liquid in PBS containing 50% glycerol, and 0.02% sodium azide.  |
| <b>Source</b>             | Polyclonal, Rabbit,IgG  |
| <b>Purification</b>       | The antibody was affinity-purified from rabbit antiserum by affinity-chromatography using epitope-specific immunogen.   |
| <b>Dilution</b>           | WB 1:500-2000 ELISA 1:5000-20000  |
| <b>Concentration</b>      | 1 mg/ml   |
| <b>Purity</b>             | ≥90%  |
| <b>Storage Stability</b>  | -20°C/1 year  |
| <b>Synonyms</b>           |   |
| <b>Observed Band</b>      | 37kD  |
| <b>Cell Pathway</b>       | Cell membrane; Multi-pass membrane protein.   |
| <b>Tissue Specificity</b> | Weakly expressed in blood leukocytes.   |
| <b>Function</b>           | developmental stage:Up-regulated during promyelocytic cell differentiation along the monocytic pathway, but not during granulocytic differentiation.,function:Putative receptor for purines coupled to G-proteins.,similarity:Belongs to the G-protein coupled receptor 1 family.,tissue specificity:Weakly expressed in blood leukocytes., |
| <b>Background</b>         | The protein encoded by this gene belongs to the family of G-protein coupled receptors that are preferentially activated by adenosine and uridine nucleotides. There is a pseudogene for this gene nearby on chromosome X. Multiple alternatively spliced transcripts have been observed. [provided by RefSeq, Apr 2016],                    |

Nanjing BYabscience technology Co.,Ltd



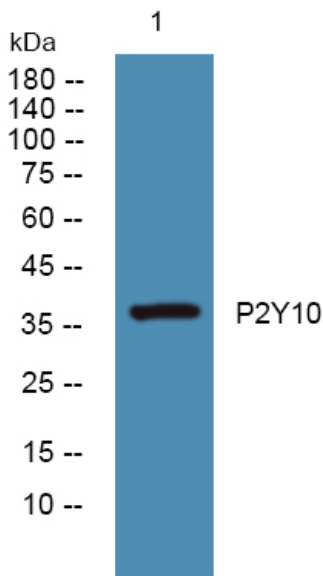
**matters needing attention**

Avoid repeated freezing and thawing!

**Usage suggestions**

This product can be used in immunological reaction related experiments. For more information, please consult technical personnel.

## Products Images



Western blot analysis of lysates from K562 cells, primary antibody was diluted at 1:1000, 4° over night