



# LPAR4 Polyclonal Antibody

|                           |  |
|---------------------------|--|
| <b>Catalog No</b>         | BYab-07531   |
| <b>Isotype</b>            | IgG  |
| <b>Reactivity</b>         | Human;Mouse  |
| <b>Applications</b>       | WB;ELISA   |
| <b>Gene Name</b>          | LPAR4 GPR23 LPA4 P2RY9   |
| <b>Protein Name</b>       | Lysophosphatidic acid receptor 4 (LPA receptor 4) (LPA-4) (G-protein coupled receptor 23) (P2Y purinoceptor 9) (P2Y9) (P2Y5-like receptor) (Purinergic receptor 9)   |
| <b>Immunogen</b>          | Synthesized peptide derived from human protein . at AA range: 10-90  |
| <b>Specificity</b>        | LPAR4 Polyclonal Antibody detects endogenous levels of protein.  |
| <b>Formulation</b>        | Liquid in PBS containing 50% glycerol, and 0.02% sodium azide.   |
| <b>Source</b>             | Polyclonal, Rabbit,IgG   |
| <b>Purification</b>       | The antibody was affinity-purified from rabbit antiserum by affinity-chromatography using epitope-specific immunogen.  |
| <b>Dilution</b>           | WB 1:500-2000 ELISA 1:5000-20000   |
| <b>Concentration</b>      | 1 mg/ml  |
| <b>Purity</b>             | ≥90%   |
| <b>Storage Stability</b>  | -20°C/1 year   |
| <b>Synonyms</b>           |  |
| <b>Observed Band</b>      | 40kD   |
| <b>Cell Pathway</b>       | Cell membrane; Multi-pass membrane protein.  |
| <b>Tissue Specificity</b> | High expression in ovary. Not detected in the brain regions thalamus, putamen, caudate, frontal cortex, pons, hypothalamus and hippocampus.  |
| <b>Function</b>           | function:Receptor for lysophosphatidic acid (LPA), a mediator of diverse cellular activities. Transduces a signal by increasing the intracellular calcium ions and by stimulating adenylyl cyclase activity. The rank order of potency for agonists of this receptor is 1-oleoyl- > 1-stearoyl- > 1-palmitoyl- > 1-myristoyl- > 1-alkyl- > 1-alkenyl-LPA.,similarity:Belongs to the G-protein coupled receptor 1 family.,tissue specificity:High expression in ovary. Not detected in the brain regions thalamus, putamen, caudate, frontal cortex, pons, hypothalamus and hippocampus., |
| <b>Background</b>         | lysophosphatidic acid receptor 4(LPAR4) Homo sapiens This gene encodes a member of the lysophosphatidic acid receptor family. It may also be related to the  |

Nanjing BYabscience technology Co.,Ltd



P2Y receptors, a family of receptors that bind purine and pyrimidine nucleotides and are coupled to G proteins. The encoded protein may play a role in monocytic differentiation. [provided by RefSeq, Feb 2009],

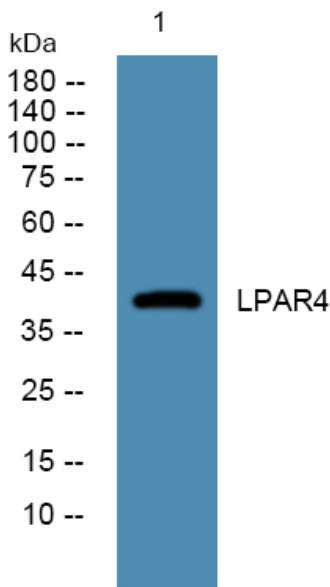
**matters needing attention**

Avoid repeated freezing and thawing!

**Usage suggestions**

This product can be used in immunological reaction related experiments. For more information, please consult technical personnel.

**Products Images**



Western blot analysis of lysates from Jarkat cells, primary antibody was diluted at 1:1000, 4° over night