



# GPR33 Polyclonal Antibody

<b>Catalog No</b>	BYab-07406
<b>Isotype</b>	IgG
<b>Reactivity</b>	Human;Rat;Mouse;
<b>Applications</b>	WB;ELISA
<b>Gene Name</b>	GPR33
<b>Protein Name</b>	Probable G-protein coupled receptor 33
<b>Immunogen</b>	Synthesized peptide derived from part region of human protein
<b>Specificity</b>	GPR33 Polyclonal Antibody detects endogenous levels of protein.
<b>Formulation</b>	Liquid in PBS containing 50% glycerol, and 0.02% sodium azide.
<b>Source</b>	Polyclonal, Rabbit,IgG
<b>Purification</b>	The antibody was affinity-purified from rabbit antiserum by affinity-chromatography using epitope-specific immunogen.
<b>Dilution</b>	WB 1:500-2000 ELISA 1:5000-20000
<b>Concentration</b>	1 mg/ml
<b>Purity</b>	≥90%
<b>Storage Stability</b>	-20°C/1 year
<b>Synonyms</b>	
<b>Observed Band</b>	36kD
<b>Cell Pathway</b>	Cell membrane; Multi-pass membrane protein.
<b>Tissue Specificity</b>	Expressed in spleen, lung, heart, liver, kidney, pancreas, thymus, gonads and leukocytes.
<b>Function</b>	function:Orphan receptor; could be a chemoattractant receptor.,polymorphism:In most individuals a nonsense mutation transforms the Arg-140 into a premature stop codon. Out of 1217 individuals, 1166 had a stop codon in both alleles, 50 were heterozygous and only one (in the Philippines) had Arg-140 in both alleles. GPR33 has undergone independent pseudogenization in human, chimpanzee, orangutan, siamang and rat. This selective inactivation may be due to its interaction with a putative pathogen that could use GPR33 as a receptor for cell invasion.,similarity:Belongs to the G-protein coupled receptor 1 family.,tissue specificity:Expressed in spleen, lung, heart, liver, kidney, pancreas, thymus, gonads and leukocytes.,

Nanjing BYabscience technology Co.,Ltd



**Background**

This gene has been identified as an orphan chemoattractant G-protein-coupled receptors (GPCR) pseudogene. Studies have shown that the inactivated gene is present as the predominant allele in the human population. A small fraction of the human population has been found to harbor an intact allele.[provided by RefSeq, Oct 2010],

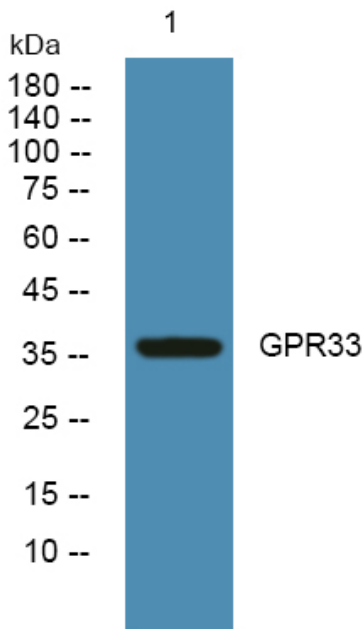
**matters needing attention**

Avoid repeated freezing and thawing!

**Usage suggestions**

This product can be used in immunological reaction related experiments. For more information, please consult technical personnel.

**Products Images**



Western blot analysis of lysates from SW480 cells, primary antibody was diluted at 1:1000, 4° over night