



GNRR2 Polyclonal Antibody

Catalog No	BYab-07400
Isotype	IgG
Reactivity	Human;Rat;Mouse;
Applications	WB;ELISA
Gene Name	GNRHR2
Protein Name	Putative gonadotropin-releasing hormone II receptor (GnRH II receptor) (GnRH-II-R) (Type II GnRH receptor)
Immunogen	Synthesized peptide derived from human protein . at AA range: 10-90
Specificity	GNRR2 Polyclonal Antibody detects endogenous levels of protein.
Formulation	Liquid in PBS containing 50% glycerol, and 0.02% sodium azide.
Source	Polyclonal, Rabbit,IgG
Purification	The antibody was affinity-purified from rabbit antiserum by affinity-chromatography using epitope-specific immunogen.
Dilution	WB 1:500-2000 ELISA 1:5000-20000
Concentration	1 mg/ml
Purity	≥90%
Storage Stability	-20°C/1 year
Synonyms	
Observed Band	32kD
Cell Pathway	Cell membrane; Multi-pass membrane protein.
Tissue Specificity	Expressed in many tissues.
Function	caution:Could be the product of a pseudogene. This protein seems to be substantially shorter than orthologous proteins in related organisms.,function:Receptor for gonadotropin releasing hormone II (GnRH II). This receptor mediates its action by association with G proteins that activate a phosphatidylinositol-calcium second messenger system .,PTM:Phosphorylated on the C-terminal cytoplasmic tail.,sequence caution:Translated as stop.,similarity:Belongs to the G-protein coupled receptor 1 family.,tissue specificity:Expressed in many tissues.,
Background	In non-hominoid primates and non-mammalian vertebrates, the gonadotropin releasing hormone 2 receptor gene (GNRHR2) encodes a seven-transmembrane G-protein coupled receptor. However, in human, the corresponding reading frame

Nanjing BYabscience technology Co.,Ltd



contains a premature stop codon, which has been suggested to encode a selenocysteine residue, but there is no solid evidence for selenocysteine incorporation (PMID: 12538601). It appears that the human GnRHR2 transcription occurs but the gene does not likely produce a functional multi-transmembrane protein. A non-transcribed pseudogene of GnRHR2 is located on chromosome 14. Multiple alternatively spliced transcript variants have been found for this gene. [provided by RefSeq, Aug 2013],

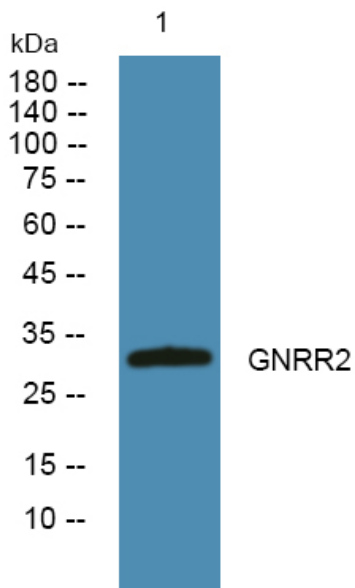
matters needing attention

Avoid repeated freezing and thawing!

Usage suggestions

This product can be used in immunological reaction related experiments. For more information, please consult technical personnel.

Products Images



Western blot analysis of lysates from K562 cells, primary antibody was diluted at 1:1000, 4° over night