



GPR84 Polyclonal Antibody

| | |
|---------------------------|--|
| Catalog No | BYab-07391 |
| Isotype | IgG |
| Reactivity | Human;Rat;Mouse; |
| Applications | WB;ELISA |
| Gene Name | GPR84 EX33 |
| Protein Name | G-protein coupled receptor 84 (Inflammation-related G-protein coupled receptor EX33) |
| Immunogen | Synthesized peptide derived from human protein . at AA range: 230-310 |
| Specificity | GPR84 Polyclonal Antibody detects endogenous levels of protein. |
| Formulation | Liquid in PBS containing 50% glycerol, and 0.02% sodium azide. |
| Source | Polyclonal, Rabbit,IgG |
| Purification | The antibody was affinity-purified from rabbit antiserum by affinity-chromatography using epitope-specific immunogen. |
| Dilution | WB 1:500-2000 ELISA 1:5000-20000 |
| Concentration | 1 mg/ml |
| Purity | ≥90% |
| Storage Stability | -20°C/1 year |
| Synonyms | |
| Observed Band | 43kD |
| Cell Pathway | Cell membrane; Multi-pass membrane protein. |
| Tissue Specificity | Expressed predominantly in hematopoietic tissues. High levels detected in the bone marrow and lower levels in the peripheral leukocytes and lung. Also expressed in brain, heart, muscle, colon, thymus, spleen, kidney, liver, placenta and intestine. Within the leukocyte population expression is higher in neutrophils and eosinophils relative to T- or B-lymphocytes. |
| Function | function:Orphan receptor.,similarity:Belongs to the G-protein coupled receptor 1 family.,tissue specificity:Expressed in brain, heart, muscle, colon, thymus, spleen, kidney, liver, placenta, intestine, bone marrow, lung and peripheral blood leukocytes. Within leukocyte population more abundant expression in neutrophils and eosinophils, in comparison with that in T- or B-lymphocytes., |
| Background | function:Orphan receptor.,similarity:Belongs to the G-protein coupled receptor 1 family.,tissue specificity:Expressed in brain, heart, muscle, colon, thymus, spleen, kidney, liver, placenta, intestine, bone marrow, lung and peripheral blood |

Nanjing BYabscience technology Co.,Ltd



leukocytes. Within leukocyte population more abundant expression in neutrophils and eosinophils, in comparison with that in T- or B-lymphocytes.,

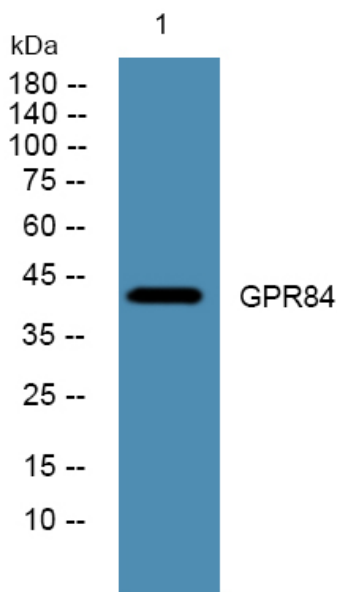
matters needing attention

Avoid repeated freezing and thawing!

Usage suggestions

This product can be used in immunological reaction related experiments. For more information, please consult technical personnel.

Products Images



Western blot analysis of lysates from SW480 cells, primary antibody was diluted at 1:1000, 4° over night