



# NPBW2 Polyclonal Antibody

<b>Catalog No</b>	BYab-07389
<b>Isotype</b>	IgG
<b>Reactivity</b>	Human;Rat;Mouse;
<b>Applications</b>	WB;ELISA
<b>Gene Name</b>	NPBWR2 GPR8
<b>Protein Name</b>	Neuropeptides B/W receptor type 2 (G-protein coupled receptor 8)
<b>Immunogen</b>	Synthesized peptide derived from human protein . at AA range: 260-340
<b>Specificity</b>	NPBW2 Polyclonal Antibody detects endogenous levels of protein.
<b>Formulation</b>	Liquid in PBS containing 50% glycerol, and 0.02% sodium azide.
<b>Source</b>	Polyclonal, Rabbit,IgG
<b>Purification</b>	The antibody was affinity-purified from rabbit antiserum by affinity-chromatography using epitope-specific immunogen.
<b>Dilution</b>	WB 1:500-2000 ELISA 1:5000-20000
<b>Concentration</b>	1 mg/ml
<b>Purity</b>	≥90%
<b>Storage Stability</b>	-20°C/1 year
<b>Synonyms</b>	
<b>Observed Band</b>	36kD
<b>Cell Pathway</b>	Cell membrane; Multi-pass membrane protein.
<b>Tissue Specificity</b>	Detected at high levels in caudate nucleus, hippocampus and amygdala; at moderate levels in the adult brain, thalamus, parietal cortex, pituitary gland, adrenal gland and lymph nodes.
<b>Function</b>	function:Interacts specifically with a number of opioid ligands. Receptor for neuropeptides B and W, which may be involved in neuroendocrine system regulation, food intake and the organization of other signals.,similarity:Belongs to the G-protein coupled receptor 1 family.,tissue specificity:Detected at high levels in caudate nucleus, hyppocampus and amygdala; at moderate levels in the adult brain, thalamus, parietal cortex, pituitary gland, adrenal gland and lymph nodes.,
<b>Background</b>	The protein encoded by this gene is an integral membrane protein and G protein-coupled receptor. The encoded protein is similar in sequence to another G protein-coupled receptor (GPR7), and it is structurally similar to opioid and somatostatin receptors. This protein binds neuropeptides B and W. This gene is

Nanjing BYabscience technology Co.,Ltd



intronless and is expressed primarily in the frontal cortex of the brain. [provided by RefSeq, Jul 2008],

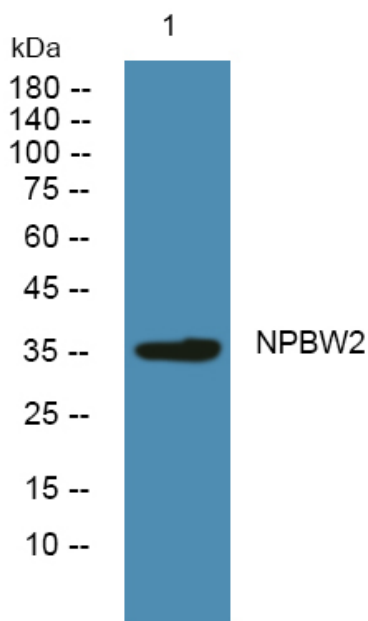
**matters needing attention**

Avoid repeated freezing and thawing!

**Usage suggestions**

This product can be used in immunological reaction related experiments. For more information, please consult technical personnel.

## Products Images



Western blot analysis of lysates from KB cells, primary antibody was diluted at 1:1000, 4° over night