



GPR78 Polyclonal Antibody

Catalog No	BYab-07388
Isotype	IgG
Reactivity	Human;Rat;Mouse;
Applications	WB;ELISA
Gene Name	GPR78 UNQ5925/PRO19818
Protein Name	G-protein coupled receptor 78
Immunogen	Synthesized peptide derived from human protein . at AA range: 290-370
Specificity	GPR78 Polyclonal Antibody detects endogenous levels of protein.
Formulation	Liquid in PBS containing 50% glycerol, and 0.02% sodium azide.
Source	Polyclonal, Rabbit,IgG
Purification	The antibody was affinity-purified from rabbit antiserum by affinity-chromatography using epitope-specific immunogen.
Dilution	WB 1:500-2000 ELISA 1:5000-20000
Concentration	1 mg/ml
Purity	≥90%
Storage Stability	-20°C/1 year
Synonyms	
Observed Band	39kD
Cell Pathway	Cell membrane; Multi-pass membrane protein.
Tissue Specificity	High level of expression in placenta. Expressed throughout the brain at low level. No expression detected in skeletal muscle, lung, heart, liver, pancreas, or kidney.
Function	function:Orphan receptor.,induction:Expression increased in fibroblasts or HeLa cells following UV-A irradiation, exposure to DNA-alkylating agents, or endoplasmic reticulum (ER) stress caused by osmotic shock or the glycosylation inhibitor tunicamycin.,similarity:Belongs to the G-protein coupled receptor 1 family.,tissue specificity:Expressed in pituitary and placenta. No expression detected in brain, skeletal muscle, lung, heart, liver, pancreas, or kidney.,
Background	The protein encoded by this gene belongs to the G protein-coupled receptor family, which contain 7 transmembrane domains and transduce extracellular signals through heterotrimeric G proteins. This is an orphan receptor, which displays significant level of constitutive activity. Association analysis shows preliminary evidence for the involvement of this gene in susceptibility to bipolar

Nanjing BYabscience technology Co.,Ltd



affective disorder and schizophrenia. Alternatively spliced transcript variants have been found for this gene. [provided by RefSeq, Nov 2011],

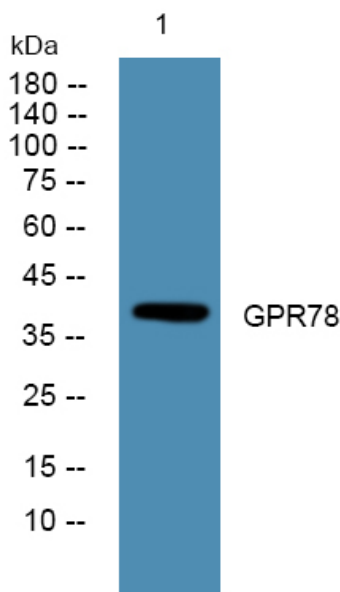
matters needing attention

Avoid repeated freezing and thawing!

Usage suggestions

This product can be used in immunological reaction related experiments. For more information, please consult technical personnel.

Products Images



Western blot analysis of lysates from A431 cells, primary antibody was diluted at 1:1000, 4° over night