



NPBW1 Polyclonal Antibody

Catalog No	BYab-07386
Isotype	IgG
Reactivity	Human;Rat;Mouse;
Applications	WB;ELISA
Gene Name	NPBWR1 GPR7
Protein Name	Neuropeptides B/W receptor type 1 (G-protein coupled receptor 7)
Immunogen	Synthesized peptide derived from human protein . at AA range: 250-330
Specificity	NPBW1 Polyclonal Antibody detects endogenous levels of protein.
Formulation	Liquid in PBS containing 50% glycerol, and 0.02% sodium azide.
Source	Polyclonal, Rabbit,IgG
Purification	The antibody was affinity-purified from rabbit antiserum by affinity-chromatography using epitope-specific immunogen.
Dilution	WB 1:500-2000 ELISA 1:5000-20000
Concentration	1 mg/ml
Purity	≥90%
Storage Stability	-20°C/1 year
Synonyms	
Observed Band	36kD
Cell Pathway	Cell membrane; Multi-pass membrane protein.
Tissue Specificity	Found in cerebellum and frontal cortex. Detected at high levels in hippocampus, amygdala and trachea; at moderate levels in fetal brain, pituitary gland and prostate. Not in caudate, accumbens, kidney or liver. Also detected at high levels in lung carcinoma.
Function	function:Interacts specifically with a number of opioid ligands. Receptor for neuropeptides B and W, which may be involved in neuroendocrine system regulation, food intake and the organization of other signals. Has a higher affinity for neuropeptide B.,similarity:Belongs to the G-protein coupled receptor 1 family.,tissue specificity:Found in cerebellum and frontal cortex. Detected at high levels in hippocampus, amygdala and trachea; at moderate levels in fetal brain, pituitary gland and prostate. Not in caudate, accumbens, kidney or liver. Also detected at high levels in lung carcinoma.,

Nanjing BYabscience technology Co.,Ltd



Background

function:Interacts specifically with a number of opioid ligands. Receptor for neuropeptides B and W, which may be involved in neuroendocrine system regulation, food intake and the organization of other signals. Has a higher affinity for neuropeptide B.,similarity:Belongs to the G-protein coupled receptor 1 family.,tissue specificity:Found in cerebellum and frontal cortex. Detected at high levels in hippocampus, amygdala and trachea; at moderate levels in fetal brain, pituitary gland and prostate. Not in caudate, accumbens, kidney or liver. Also detected at high levels in lung carcinoma.,

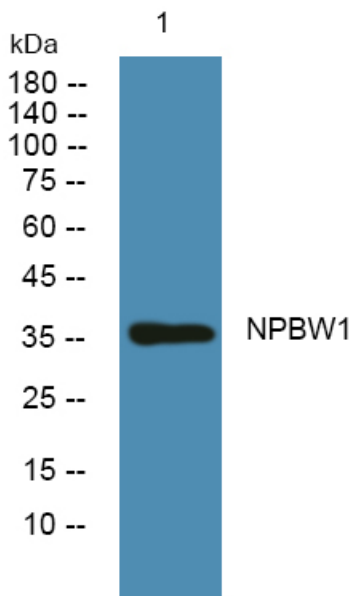
matters needing attention

Avoid repeated freezing and thawing!

Usage suggestions

This product can be used in immunological reaction related experiments. For more information, please consult technical personnel.

Products Images



Western blot analysis of lysates from K562 cells, primary antibody was diluted at 1:1000, 4° over night