



GPR3 Polyclonal Antibody

Catalog No	BYab-07378
Isotype	IgG
Reactivity	Human;Mouse;Rat
Applications	WB;ELISA
Gene Name	GPR3 ACCA
Protein Name	G-protein coupled receptor 3 (ACCA orphan receptor)
Immunogen	Synthesized peptide derived from human protein . at AA range: 260-340
Specificity	GPR3 Polyclonal Antibody detects endogenous levels of protein.
Formulation	Liquid in PBS containing 50% glycerol, and 0.02% sodium azide.
Source	Polyclonal, Rabbit,IgG
Purification	The antibody was affinity-purified from rabbit antiserum by affinity-chromatography using epitope-specific immunogen.
Dilution	WB 1:500-2000 ELISA 1:5000-20000
Concentration	1 mg/ml
Purity	≥90%
Storage Stability	-20°C/1 year
Synonyms	
Observed Band	36kD
Cell Pathway	Cell membrane; Multi-pass membrane protein.
Tissue Specificity	Expressed predominantly in the central nervous system, and at low levels in the lung, kidney, testis, ovary and eye. Highly expressed in regions of the brain implicated in the Alzheimer disease.
Function	function:Orphan receptor. The activity of this receptor is mediated by G proteins which activate adenylate cyclase.,similarity:Belongs to the G-protein coupled receptor 1 family.,tissue specificity:Expressed predominantly in the central nervous system, and at low levels in the lung, kidney, testis, ovary and eye.,
Background	This gene is a member of the G protein-coupled receptor family and is found in the cell membrane. G protein-coupled receptors, characterized by a seven transmembrane domain motif, are involved in translating outside signals into G protein mediated intracellular effects. The encoded protein activates adenylate cyclase and modulates amyloid-beta production in a mouse model, suggesting that it may play a role in Alzheimer's disease. [provided by RefSeq, Oct

Nanjing BYabscience technology Co.,Ltd



2012],

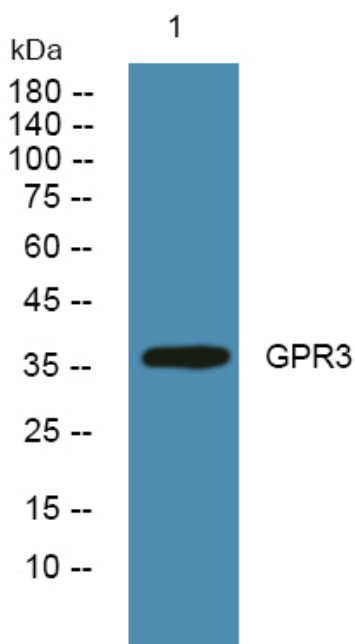
matters needing attention

Avoid repeated freezing and thawing!

Usage suggestions

This product can be used in immunological reaction related experiments. For more information, please consult technical personnel.

Products Images



Western blot analysis of lysates from K562 cells, primary antibody was diluted at 1:1000, 4°over night