



AGTR2 Polyclonal Antibody

Catalog No	BYab-07361
Isotype	IgG
Reactivity	Human;Mouse
Applications	WB;ELISA
Gene Name	AGTR2
Protein Name	Type-2 angiotensin II receptor (Angiotensin II type-2 receptor) (AT2)
Immunogen	Synthesized peptide derived from human protein . at AA range: 30-110
Specificity	AGTR2 Polyclonal Antibody detects endogenous levels of protein.
Formulation	Liquid in PBS containing 50% glycerol, and 0.02% sodium azide.
Source	Polyclonal, Rabbit,IgG
Purification	The antibody was affinity-purified from rabbit antiserum by affinity-chromatography using epitope-specific immunogen.
Dilution	WB 1:500-2000 ELISA 1:5000-20000
Concentration	1 mg/ml
Purity	≥90%
Storage Stability	-20°C/1 year
Synonyms	
Observed Band	39kD
Cell Pathway	Cell membrane; Multi-pass membrane protein.
Tissue Specificity	In adult, highly expressed in myometrium with lower levels in adrenal gland and fallopian tube. Expressed in the cerebellum. Very highly expressed in fetal kidney and intestine.
Function	function:Receptor for angiotensin II. Cooperates with MTUS1 to inhibit ERK2 activation and cell proliferation.,similarity:Belongs to the G-protein coupled receptor 1 family.,subunit:Interacts with MTUS1.,tissue specificity:In adult, highly expressed in myometrium with lower levels in adrenal gland and fallopian tube. Very highly expressed in fetal kidney and intestine.,
Background	The protein encoded by this gene belongs to the G-protein coupled receptor 1 family, and functions as a receptor for angiotensin II. It is an intergral membrane protein that is highly expressed in fetus, but scantily in adult tissues, except brain, adrenal medulla, and atretic ovary. This receptor has been shown to mediate programmed cell death and this apoptotic function may play an important role in

Nanjing BYabscience technology Co.,Ltd



developmental biology and pathophysiology. Mutations in this gene are been associated with X-linked mental retardation. [provided by RefSeq, Jan 2010],

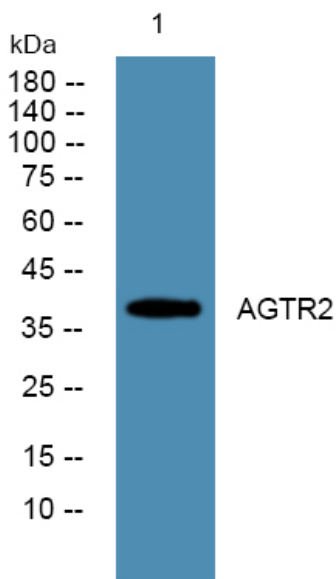
matters needing attention

Avoid repeated freezing and thawing!

Usage suggestions

This product can be used in immunological reaction related experiments. For more information, please consult technical personnel.

Products Images



Western blot analysis of lysates from HCT116 cells, primary antibody was diluted at 1:1000, 4°over night