



PDYN Polyclonal Antibody

Catalog No	BYab-07339
Isotype	IgG
Reactivity	Human;Mouse;Rat
Applications	WB;ELISA
Gene Name	PDYN
Protein Name	Proenkephalin-B (Beta-neoendorphin-dynorphin) (Preprodynorphin) [Cleaved into: Alpha-neoendorphin; Beta-neoendorphin; Big dynorphin (Big Dyn); Dynorphin A(1-17) (Dyn-A17) (Dynorphin A); Dynorphin A(1-
Immunogen	Synthesized peptide derived from human protein . at AA range: 201-250
Specificity	PDYN Polyclonal Antibody detects endogenous levels of protein.
Formulation	Liquid in PBS containing 50% glycerol, and 0.02% sodium azide.
Source	Polyclonal, Rabbit,IgG
Purification	The antibody was affinity-purified from rabbit antiserum by affinity-chromatography using epitope-specific immunogen.
Dilution	WB 1:500-2000 ELISA 1:5000-20000
Concentration	1 mg/ml
Purity	≥90%
Storage Stability	-20°C/1 year
Synonyms	
Observed Band	27kD
Cell Pathway	Secreted.
Tissue Specificity	Brain,
Function	function:Dynorphin peptides differentially regulate the kappa opioid receptor. Dynorphin A(1-13) has a typical opioid activity, it is 700 times more potent than Leu-enkephalin.,function:Leu-enkephalins compete with and mimic the effects of opiate drugs. They play a role in a number of physiologic functions, including pain perception and responses to stress.,function:Leuomorphin has a typical opioid activity and may have anti-apoptotic effect.,PTM:The N-terminal domain contains 6 conserved cysteines thought to be involved in disulfide bonding and/or processing.,similarity:Belongs to the opioid neuropeptide precursor family.,
Background	The protein encoded by this gene is a preproprotein that is proteolytically processed to form the secreted opioid peptides beta-neoendorphin, dynorphin,

Nanjing BYabscience technology Co.,Ltd



leu-enkephalin, rimorphin, and leumorphin. These peptides are ligands for the kappa-type of opioid receptor. Dynorphin is involved in modulating responses to several psychoactive substances, including cocaine. Multiple alternatively spliced transcript variants encoding the same protein have been found for this gene. [provided by RefSeq, Jul 2010],

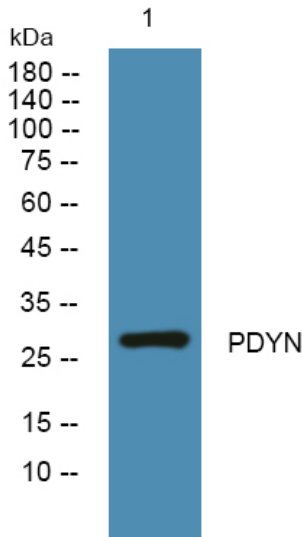
matters needing attention

Avoid repeated freezing and thawing!

Usage suggestions

This product can be used in immunological reaction related experiments. For more information, please consult technical personnel.

Products Images



Western blot analysis of lysates from SW480 cells, primary antibody was diluted at 1:1000, 4° over night