



RN135 Polyclonal Antibody

Catalog No	BYab-07338
Isotype	IgG
Reactivity	Human;Rat;Mouse;
Applications	WB;ELISA
Gene Name	RNF135 L13
Protein Name	E3 ubiquitin-protein ligase RNF135 (EC 6.3.2.-) (RING1 E3 ubiquitin ligase) (REUL) (RING finger protein 135) (Riplet)
Immunogen	Synthesized peptide derived from human protein . at AA range: 81-130
Specificity	RN135 Polyclonal Antibody detects endogenous levels of protein.
Formulation	Liquid in PBS containing 50% glycerol, and 0.02% sodium azide.
Source	Polyclonal, Rabbit,IgG
Purification	The antibody was affinity-purified from rabbit antiserum by affinity-chromatography using epitope-specific immunogen.
Dilution	WB 1:500-2000 ELISA 1:5000-20000
Concentration	1 mg/ml
Purity	≥90%
Storage Stability	-20°C/1 year
Synonyms	
Observed Band	47kD
Cell Pathway	Cytoplasm . Cytoplasm, Stress granule .
Tissue Specificity	Expressed in skeletal muscle, spleen, kidney, placenta, prostate, stomach, thyroid and tongue. Also weakly expressed in heart, thymus, liver and lung.
Function	disease:Defects in RNF135 are the cause of RNF135-related overgrowth syndrome. RNF135-related overgrowth syndrome is characterized by overgrowth, learning disability, dysmorphic features and variable additional features.,similarity:Contains 1 B30.2/SPRY domain.,similarity:Contains 1 RING-type zinc finger.,
Background	ring finger protein 135(RNF135) Homo sapiens The protein encoded by this gene contains a RING finger domain, a motif present in a variety of functionally distinct proteins and known to be involved in protein-protein and protein-DNA interactions. This gene is located in a chromosomal region known to be frequently deleted in patients with neurofibromatosis. Alternatively spliced transcript variants encoding distinct isoforms have been reported. [provided by RefSeq, Jul 2008],

Nanjing BYabscience technology Co.,Ltd



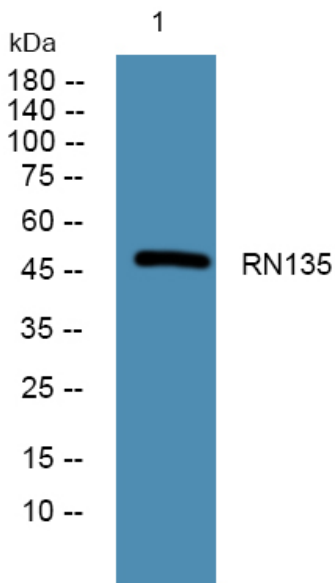
matters needing attention

Avoid repeated freezing and thawing!

Usage suggestions

This product can be used in immunological reaction related experiments. For more information, please consult technical personnel.

Products Images



Western blot analysis of lysates from SH-SY5Y cells, primary antibody was diluted at 1:1000, 4° over night