



# ZBP1 Polyclonal Antibody

<b>Catalog No</b>	BYab-07330
<b>Isotype</b>	IgG
<b>Reactivity</b>	Human;Rat;Mouse;
<b>Applications</b>	WB;ELISA
<b>Gene Name</b>	ZBP1 C20orf183 DLM1
<b>Protein Name</b>	Z-DNA-binding protein 1 (Tumor stroma and activated macrophage protein DLM-1)
<b>Immunogen</b>	Synthesized peptide derived from human protein . at AA range: 21-70
<b>Specificity</b>	ZBP1 Polyclonal Antibody detects endogenous levels of protein.
<b>Formulation</b>	Liquid in PBS containing 50% glycerol, and 0.02% sodium azide.
<b>Source</b>	Polyclonal, Rabbit,IgG
<b>Purification</b>	The antibody was affinity-purified from rabbit antiserum by affinity-chromatography using epitope-specific immunogen.
<b>Dilution</b>	WB 1:500-2000 ELISA 1:5000-20000
<b>Concentration</b>	1 mg/ml
<b>Purity</b>	≥90%
<b>Storage Stability</b>	-20°C/1 year
<b>Synonyms</b>	
<b>Observed Band</b>	47kD
<b>Cell Pathway</b>	Cytoplasm . Nucleus . Mainly cytoplasmic (PubMed:16876127, PubMed:16990255). Accumulates in the nucleus in response to influenza A virus (IAV) infection: senses IAV defective viral genomes RNA in the nucleus (By similarity). .; [Isoform 7]: Cytoplasm . Nucleus . Compared to isoform 1, a higher proportion of this isoform is localized in the nucleus. .
<b>Tissue Specificity</b>	Highly expressed in lymphatic tissues including lymph node, leukocytes, tonsil, bone marrow and spleen (PubMed:11842111). Expressed to a lesser extent in thymus, lung and liver (PubMed:11842111).
<b>Function</b>	alternative products:Additional isoforms seem to exist,function:May play a role in host defense against tumors and pathogens. Binds Z-DNA.,similarity:Contains 2 DRADA repeats.,tissue specificity:Highly expressed in lymphatic tissues including lymph node, leukocytes, tonsil, bone marrow and spleen. Expressed to a lesser extent in thymus, lung and liver.,

**Nanjing BYabscience technology Co.,Ltd**



**Background**

This gene encodes a Z-DNA binding protein. The encoded protein plays a role in the innate immune response by binding to foreign DNA and inducing type-I interferon production. Alternatively spliced transcript variants encoding multiple isoforms have been observed for this gene. [provided by RefSeq, Dec 2011],

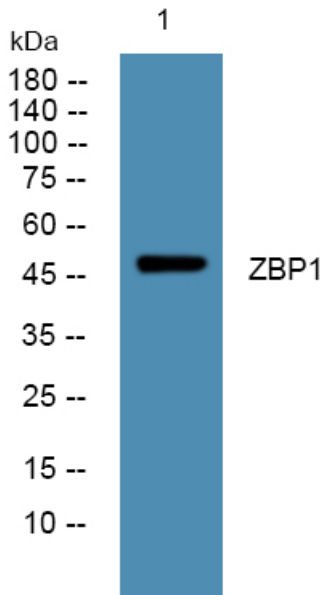
**matters needing attention**

Avoid repeated freezing and thawing!

**Usage suggestions**

This product can be used in immunological reaction related experiments. For more information, please consult technical personnel.

**Products Images**



Western blot analysis of lysates from SW480 cells, primary antibody was diluted at 1:1000, 4° over night