



# SPXN Polyclonal Antibody

<b>Catalog No</b>	BYab-07329
<b>Isotype</b>	IgG
<b>Reactivity</b>	Human;Rat;Mouse;
<b>Applications</b>	WB;ELISA
<b>Gene Name</b>	C12orf39
<b>Protein Name</b>	Spexin (NPQ)
<b>Immunogen</b>	Synthesized peptide derived from human protein . at AA range: 1-50
<b>Specificity</b>	SPXN Polyclonal Antibody detects endogenous levels of protein.
<b>Formulation</b>	Liquid in PBS containing 50% glycerol, and 0.02% sodium azide.
<b>Source</b>	Polyclonal, Rabbit,IgG
<b>Purification</b>	The antibody was affinity-purified from rabbit antiserum by affinity-chromatography using epitope-specific immunogen.
<b>Dilution</b>	WB 1:500-2000 ELISA 1:5000-20000
<b>Concentration</b>	1 mg/ml
<b>Purity</b>	≥90%
<b>Storage Stability</b>	-20°C/1 year
<b>Synonyms</b>	
<b>Observed Band</b>	12kD
<b>Cell Pathway</b>	Secreted. Secreted, extracellular space. Cytoplasmic vesicle, secretory vesicle. Secreted via the classical ER/Golgi-dependent pathway into the extracellular medium largely as a full-length protein without the signal peptide, and not as a hydrolyzed and amidated peptide (PubMed:19193193 and PubMed:17284679). Localized extracellularly surrounding the villous trophoblastic cells. Detected in the serum.
<b>Tissue Specificity</b>	Expressed in the type I glomic cells within the carotid body (at protein level). Expressed predominantly in pancreas, testis, kidney, brain and placenta. Expressed in submucosal layer of esophagus and stomach fundus.
<b>Function</b>	function:Induces contraction of stomach muscle.,tissue specificity:Expressed in submucosal layer of esophagus and stomach fundus. Expressed in brain, pancreas and kidney.,
<b>Background</b>	The protein encoded by this gene is a hormone involved in modulation of cardiovascular and renal function. It has also been shown in rats to cause weight loss. Several transcript variants have been found for this gene. [provided by

**Nanjing BYabscience technology Co.,Ltd**



RefSeq, Feb 2016],

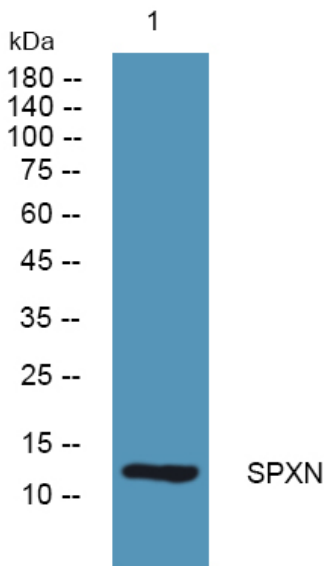
**matters needing attention**

Avoid repeated freezing and thawing!

**Usage suggestions**

This product can be used in immunological reaction related experiments. For more information, please consult technical personnel.

## Products Images



Western blot analysis of lysates from SH-SY5Y cells, primary antibody was diluted at 1:1000, 4° over night