



# PGRP3 Polyclonal Antibody

<b>Catalog No</b>	BYab-07326
<b>Isotype</b>	IgG
<b>Reactivity</b>	Human;Mouse
<b>Applications</b>	WB;ELISA
<b>Gene Name</b>	PGLYRP3 PGRPIA
<b>Protein Name</b>	Peptidoglycan recognition protein 3 (Peptidoglycan recognition protein I-alpha) (PGLYRP1alpha) (PGRP-I-alpha) (Peptidoglycan recognition protein intermediate alpha)
<b>Immunogen</b>	Synthesized peptide derived from human protein . at AA range: 51-100
<b>Specificity</b>	PGRP3 Polyclonal Antibody detects endogenous levels of protein.
<b>Formulation</b>	Liquid in PBS containing 50% glycerol, and 0.02% sodium azide.
<b>Source</b>	Polyclonal, Rabbit,IgG
<b>Purification</b>	The antibody was affinity-purified from rabbit antiserum by affinity-chromatography using epitope-specific immunogen.
<b>Dilution</b>	WB 1:500-2000 ELISA 1:5000-20000
<b>Concentration</b>	1 mg/ml
<b>Purity</b>	≥90%
<b>Storage Stability</b>	-20°C/1 year
<b>Synonyms</b>	
<b>Observed Band</b>	37kD
<b>Cell Pathway</b>	Secreted .
<b>Tissue Specificity</b>	Detected in skin epidermis, eccrine sweat glands and ducts, ciliary body epithelial cells of the eye, in small intestine, colon, stomach and in mature epithelial cells of the tongue (at protein level). Highly expressed in skin and esophagus, expressed also in tonsils and thymus and to a much lesser extent in the stomach, descending colon, rectum and brain.
<b>Function</b>	function: Binds to murein peptidoglycans (PGN) of Gram-positive bacteria. May play a role in innate immunity.,similarity: Belongs to the N-acetylmuramoyl-L-alanine amidase 2 family.,subunit: Monomer and dimer.,tissue specificity: Highly expressed in the esophagus, expressed also in tonsils and thymus, and to a much lesser extent in the stomach, descending colon, rectum and brain.,

Nanjing BYabscience technology Co.,Ltd



**Background**

This gene encodes a peptidoglycan recognition protein, which belongs to the N-acetylmuramoyl-L-alanine amidase 2 family. These proteins are part of the innate immune system and recognize peptidoglycan, a ubiquitous component of bacterial cell walls. This antimicrobial protein binds to murein peptidoglycans of Gram-positive bacteria. [provided by RefSeq, Oct 2014],

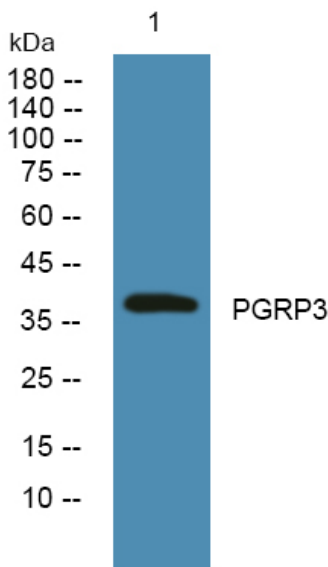
**matters needing attention**

Avoid repeated freezing and thawing!

**Usage suggestions**

This product can be used in immunological reaction related experiments. For more information, please consult technical personnel.

**Products Images**



Western blot analysis of lysates from DU145 cells, primary antibody was diluted at 1:1000, 4° over night