



# SCTM1 Polyclonal Antibody

<b>Catalog No</b>	BYab-07308
<b>Isotype</b>	IgG
<b>Reactivity</b>	Human;Rat;Mouse;
<b>Applications</b>	WB;ELISA
<b>Gene Name</b>	SECTM1 K12
<b>Protein Name</b>	Secreted and transmembrane protein 1 (Protein K-12)
<b>Immunogen</b>	Synthesized peptide derived from human protein . at AA range: 71-120
<b>Specificity</b>	SCTM1 Polyclonal Antibody detects endogenous levels of protein.
<b>Formulation</b>	Liquid in PBS containing 50% glycerol, and 0.02% sodium azide.
<b>Source</b>	Polyclonal, Rabbit,IgG
<b>Purification</b>	The antibody was affinity-purified from rabbit antiserum by affinity-chromatography using epitope-specific immunogen.
<b>Dilution</b>	WB 1:500-2000 ELISA 1:5000-20000
<b>Concentration</b>	1 mg/ml
<b>Purity</b>	≥90%
<b>Storage Stability</b>	-20°C/1 year
<b>Synonyms</b>	
<b>Observed Band</b>	27kD
<b>Cell Pathway</b>	Cell membrane ; Single-pass type I membrane protein . Secreted.
<b>Tissue Specificity</b>	Detected at the highest levels in peripheral blood leukocytes and breast cancer cell lines. Found in leukocytes of the myeloid lineage, with the strongest expression observed in granulocytes and no detectable expression in lymphocytes. Expressed in thymic epithelial cells and fibroblasts.
<b>Function</b>	subunit:Interacts with CD7.,tissue specificity:Detected at the highest levels in peripheral blood leukocytes and breast cancer cell lines. Found in leukocytes of the myeloid lineage, with the strongest expression observed in granulocytes and no detectable expression in lymphocytes.,
<b>Background</b>	This gene encodes a transmembrane and secreted protein with characteristics of a type 1a transmembrane protein. It is found in a perinuclear Golgi-like pattern and thought to be involved in hematopoietic and/or immune system processes. [provided by RefSeq, Jul 2008],

Nanjing BYabscience technology Co.,Ltd



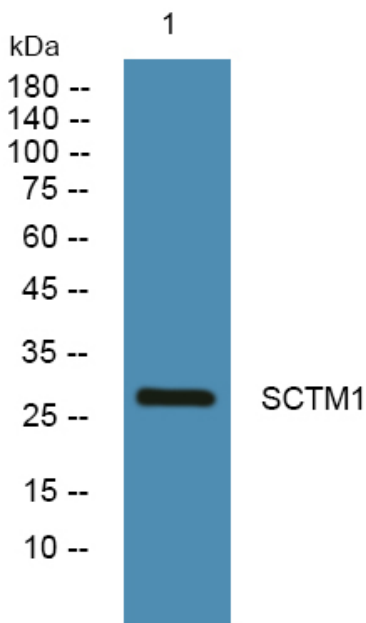
**matters needing attention**

Avoid repeated freezing and thawing!

**Usage suggestions**

This product can be used in immunological reaction related experiments. For more information, please consult technical personnel.

## Products Images



Western blot analysis of lysates from U2OS cells, primary antibody was diluted at 1:1000, 4° over night