



UPK3A Polyclonal Antibody

Catalog No	BYab-07304
Isotype	IgG
Reactivity	Human;Mouse
Applications	WB;ELISA
Gene Name	UPK3A UPK3
Protein Name	Uroplakin-3a (UP3a) (Uroplakin III) (UPIII)
Immunogen	Synthesized peptide derived from human protein . at AA range: 232-281
Specificity	UPK3A Polyclonal Antibody detects endogenous levels of protein.
Formulation	Liquid in PBS containing 50% glycerol, and 0.02% sodium azide.
Source	Polyclonal, Rabbit,IgG
Purification	The antibody was affinity-purified from rabbit antiserum by affinity-chromatography using epitope-specific immunogen.
Dilution	WB 1:500-2000 ELISA 1:5000-20000
Concentration	1 mg/ml
Purity	≥90%
Storage Stability	-20°C/1 year
Synonyms	
Observed Band	31kD
Cell Pathway	Endoplasmic reticulum membrane ; Single-pass type I membrane protein . Heterodimer formation with UPK1B is a prerequisite to exit out of the endoplasmic reticulum (ER) .
Tissue Specificity	Expressed in ureter.
Function	disease:Defects in UPK3A are a cause of renal adysplasia [MIM:191830]; also known as renal agenesis or renal aplasia. Renal agenesis refers to the absence of one (unilateral) or both (bilateral) kidneys at birth. Bilateral renal agenesis belongs to a group of perinatally lethal renal diseases, including severe bilateral renal dysplasia, unilateral renal agenesis with contralateral dysplasia and severe obstructive uropathy.,function:Component of the asymmetric unit membrane (AUM); a highly specialized biomembrane elaborated by terminally differentiated urothelial cells. May play an important role in AUM-cytoskeleton interaction in terminally differentiated urothelial cells. It also contributes to the formation of urothelial glycocalyx which may play an important role in preventing bacterial adherence.,similarity:Belongs to the uroplakin-3 family.,subcellular

Nanjing BYabscience technology Co.,Ltd



location:Heterodimer formation

Background

This gene encodes a member of the uroplakin family, a group of transmembrane proteins that form complexes on the apical surface of the bladder epithelium. Mutations in this gene may be associated with renal adysplasia. Alternatively spliced transcript variants have been described.[provided by RefSeq, Nov 2009],

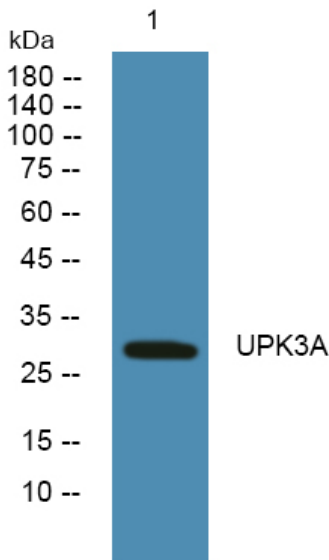
matters needing attention

Avoid repeated freezing and thawing!

Usage suggestions

This product can be used in immunological reaction related experiments. For more information, please consult technical personnel.

Products Images



Western blot analysis of lysates from KB cells, primary antibody was diluted at 1:1000, 4°over night