



PIP Polyclonal Antibody

| | |
|----------------------------------|---|
| Catalog No | BYab-07297 |
| Isotype | IgG |
| Reactivity | Human;Mouse;Rat |
| Applications | WB;ELISA |
| Gene Name | PIP GCDFP15 GPII4 |
| Protein Name | Prolactin-inducible protein (Gross cystic disease fluid protein 15) (GCDFP-15) (Prolactin-induced protein) (Secretory actin-binding protein) (SABP) (gp17) |
| Immunogen | Synthesized peptide derived from human protein . at AA range: 11-60 |
| Specificity | PIP Polyclonal Antibody detects endogenous levels of protein. |
| Formulation | Liquid in PBS containing 50% glycerol, and 0.02% sodium azide. |
| Source | Polyclonal, Rabbit,IgG |
| Purification | The antibody was affinity-purified from rabbit antiserum by affinity-chromatography using epitope-specific immunogen. |
| Dilution | WB 1:500-2000 ELISA 1:5000-20000 |
| Concentration | 1 mg/ml |
| Purity | ≥90% |
| Storage Stability | -20°C/1 year |
| Synonyms | |
| Observed Band | 16kD |
| Cell Pathway | Secreted. |
| Tissue Specificity | Expressed in pathological conditions of the mammary gland and in several exocrine tissues, such as the lacrimal, salivary, and sweat glands. |
| Function | induction:By prolactin and androgen; inhibited by estrogen.,similarity:Belongs to the PIP family.,subunit:Monomer. Interacts with AZGP1.,tissue specificity:Expressed in pathological conditions of the mammary gland and in several exocrine tissues, such as the lacrimal, salivary, and sweat glands., |
| Background | induction:By prolactin and androgen; inhibited by estrogen.,similarity:Belongs to the PIP family.,subunit:Monomer. Interacts with AZGP1.,tissue specificity:Expressed in pathological conditions of the mammary gland and in several exocrine tissues, such as the lacrimal, salivary, and sweat glands., |
| matters needing attention | Avoid repeated freezing and thawing! |

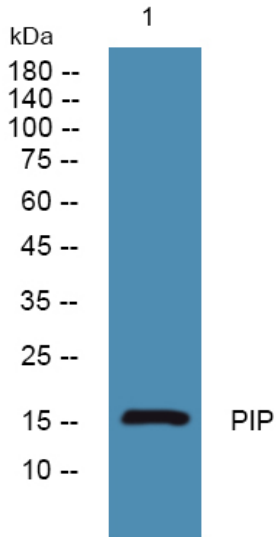
Nanjing BYabscience technology Co.,Ltd



Usage suggestions

This product can be used in immunological reaction related experiments. For more information, please consult technical personnel.

Products Images



Western blot analysis of lysates from K562 cells, primary antibody was diluted at 1:1000, 4° over night