



KGFL1 Polyclonal Antibody

Catalog No	BYab-07292
Isotype	IgG
Reactivity	Human;Rat;Mouse;
Applications	WB;ELISA
Gene Name	KGFLP1
Protein Name	Putative keratinocyte growth factor-like protein 1 (KGF-like protein 1)
Immunogen	Synthesized peptide derived from human protein . at AA range: 41-90
Specificity	KGFL1 Polyclonal Antibody detects endogenous levels of protein.
Formulation	Liquid in PBS containing 50% glycerol, and 0.02% sodium azide.
Source	Polyclonal, Rabbit,IgG
Purification	The antibody was affinity-purified from rabbit antiserum by affinity-chromatography using epitope-specific immunogen.
Dilution	WB 1:500-2000 ELISA 1:5000-20000
Concentration	1 mg/ml
Purity	≥90%
Storage Stability	-20°C/1 year
Synonyms	
Observed Band	10kD
Cell Pathway	
Tissue Specificity	
Function	ovarian follicle development, tissue homeostasis, hair follicle development, reproductive developmental process,cellular amino acid derivative metabolic process, biogenic amine metabolic process, phospholipid metabolic process,lycerophospholipid metabolic process, phosphatidylcholine biosynthetic process, ectoderm development, sex differentiation, positive regulation of cell proliferation, gonad development, epidermis development, female gonad development, lipid biosynthetic process, phospholipid biosynthetic process, response to wounding, organophosphate metabolic process, molting cycle process, hair cycle process, ovulation cycle process, respiratory tube development,lung development, hair follicle morphogenesis, multicellular organism reproduction, tube development, wound healing,regulation of cell proliferation, molting cycle, ethanolamine and derivative metabolic

Nanjing BYabscience technology Co.,Ltd



process, homeostat

Background

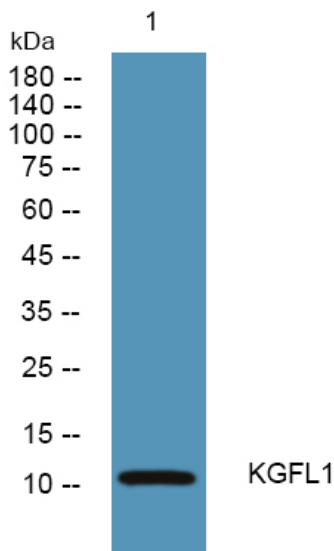
matters needing attention

Avoid repeated freezing and thawing!

Usage suggestions

This product can be used in immunological reaction related experiments. For more information, please consult technical personnel.

Products Images



Western blot analysis of lysates from DU145 cells, primary antibody was diluted at 1:1000, 4° over night