



RNAS4 Polyclonal Antibody

Catalog No	BYab-07280
Isotype	IgG
Reactivity	Human;Mouse
Applications	WB;ELISA
Gene Name	RNASE4 RNS4
Protein Name	Ribonuclease 4 (RNase 4) (EC 3.1.27.-)
Immunogen	Synthesized peptide derived from human protein . at AA range: Internal
Specificity	RNAS4 Polyclonal Antibody detects endogenous levels of protein.
Formulation	Liquid in PBS containing 50% glycerol, and 0.02% sodium azide.
Source	Polyclonal, Rabbit,IgG
Purification	The antibody was affinity-purified from rabbit antiserum by affinity-chromatography using epitope-specific immunogen.
Dilution	WB 1:500-2000 ELISA 1:5000-20000
Concentration	1 mg/ml
Purity	≥90%
Storage Stability	-20°C/1 year
Synonyms	
Observed Band	16kD
Cell Pathway	Secreted.
Tissue Specificity	Fetal brain,Fetal liver,Pancreas,Placenta,Plasma,
Function	function:This RNase has marked specificity towards the 3' side of uridine nucleotides.,similarity:Belongs to the pancreatic ribonuclease family.,
Background	The protein encoded by this gene belongs to the pancreatic ribonuclease family. It plays an important role in mRNA cleavage and has marked specificity towards the 3' side of uridine nucleotides. Alternative splicing results in four transcript variants encoding the same protein. This gene and the gene that encodes angiogenin share promoters and 5' exons. Each gene splices to a unique downstream exon that contains its complete coding region. [provided by RefSeq, Aug 2013],

Nanjing BYabscience technology Co.,Ltd



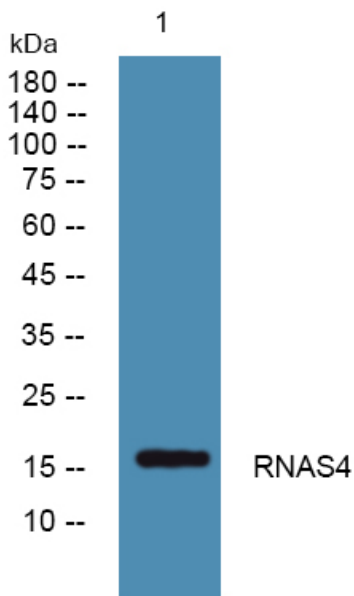
matters needing attention

Avoid repeated freezing and thawing!

Usage suggestions

This product can be used in immunological reaction related experiments. For more information, please consult technical personnel.

Products Images



Western blot analysis of lysates from Jarkat cells, primary antibody was diluted at 1:1000, 4° over night