



FCG3B Polyclonal Antibody

Catalog No	BYab-07273
Isotype	IgG
Reactivity	Human;Rat;Mouse;
Applications	WB;ELISA
Gene Name	FCGR3B CD16B FCG3 FCGR3 IGFR3
Protein Name	Low affinity immunoglobulin gamma Fc region receptor III-B (Fc-gamma RIII-beta) (Fc-gamma RIII) (Fc-gamma RIIIb) (FcRIII) (FcRIIIb) (FcR-10) (IgG Fc receptor III-1) (CD antigen CD16b)
Immunogen	Synthesized peptide derived from human protein . at AA range: 90-170
Specificity	FCG3B Polyclonal Antibody detects endogenous levels of protein.
Formulation	Liquid in PBS containing 50% glycerol, and 0.02% sodium azide.
Source	Polyclonal, Rabbit,IgG
Purification	The antibody was affinity-purified from rabbit antiserum by affinity-chromatography using epitope-specific immunogen.
Dilution	WB 1:500-2000 ELISA 1:5000-20000
Concentration	1 mg/ml
Purity	≥90%
Storage Stability	-20°C/1 year
Synonyms	
Observed Band	25kD
Cell Pathway	Cell membrane ; Lipid-anchor, GPI-anchor . Secreted. Secreted after cleavage.
Tissue Specificity	Expressed specifically by polymorphonuclear leukocytes (neutrophils). Also expressed by stimulated eosinophils.
Function	disease:The more active FCGR3B*01 allele has been associated with severe renal disease in certain systemic vasculitides.,function:Receptor for the Fc region of immunoglobulins gamma. Low affinity receptor. Binds complexed or aggregated IgG and also monomeric IgG. Contrary to III-A, is not capable to mediate antibody-dependent cytotoxicity and phagocytosis. May serve as a trap for immune complexes in the peripheral circulation which does not activate neutrophils.,miscellaneous:Encoded by one of two nearly identical genes: FCGR3A and FCGR3B (Shown here) which are expressed in a tissue-specific manner. The Phe-203 in FCGR3A determines the transmembrane domains whereas the Ser-203 in FCGR3B determines the

Nanjing BYabscience technology Co.,Ltd



GPI-anchoring, polymorphism: There are three allelic forms of FCGR3B: FCGR3B*01 (NA-1), FCGR3B*02 (HNA-1b, NA-2) (shown here) and SH. FCGR3B*01 and FCGR3B*02 are detectable with antibodies

Background

The protein encoded by this gene is a low affinity receptor for the Fc region of gamma immunoglobulins (IgG). The encoded protein acts as a monomer and can bind either monomeric or aggregated IgG. This gene may function to capture immune complexes in the peripheral circulation. Several transcript variants encoding different isoforms have been found for this gene. A highly-similar gene encoding a related protein is also found on chromosome 1. [provided by RefSeq, Aug 2012],

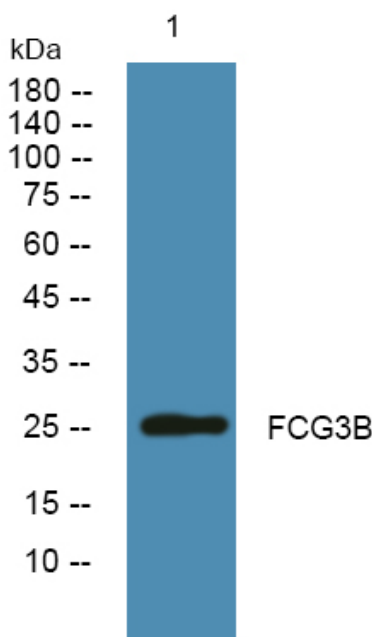
matters needing attention

Avoid repeated freezing and thawing!

Usage suggestions

This product can be used in immunological reaction related experiments. For more information, please consult technical personnel.

Products Images



Western blot analysis of lysates from A431 cells, primary antibody was diluted at 1:1000, 4° over night