



CLC2D Polyclonal Antibody

Catalog No	BYab-07269
Isotype	IgG
Reactivity	Human;Mouse
Applications	WB;ELISA
Gene Name	CLEC2D CLAX LLT1 OCIL
Protein Name	C-type lectin domain family 2 member D (Lectin-like NK cell receptor) (Lectin-like transcript 1) (LLT-1) (Osteoclast inhibitory lectin)
Immunogen	Synthesized peptide derived from human protein . at AA range: 40-120
Specificity	CLC2D Polyclonal Antibody detects endogenous levels of protein.
Formulation	Liquid in PBS containing 50% glycerol, and 0.02% sodium azide.
Source	Polyclonal, Rabbit,IgG
Purification	The antibody was affinity-purified from rabbit antiserum by affinity-chromatography using epitope-specific immunogen.
Dilution	WB 1:500-2000 ELISA 1:5000-20000
Concentration	1 mg/ml
Purity	≥90%
Storage Stability	-20°C/1 year
Synonyms	
Observed Band	21kD
Cell Pathway	Cell membrane ; Single-pass type II membrane protein .; [Isoform 2]: Endoplasmic reticulum .; [Isoform 4]: Endoplasmic reticulum .
Tissue Specificity	Detected in peripheral blood leukocytes, osteoblasts, lymph node, thymus and spleen. Isoform 1, isoform 2 and isoform 4 are expressed in T- and B-lymphocytes, and at lower levels in NK cells. They are also expressed in B-cell lines and LPS-matured monocyte-derived dendritic cells.
Function	function:Receptor for KLRB1 that protects target cells against natural killer cell-mediated lysis. Inhibits osteoclast formation. Inhibits bone resorption. Modulates the release of interferon-gamma. Binds high molecular weight sulfated glycosaminoglycans.,induction:Up-regulated by IL-1alpha and prostaglandin E2 in cultured osteogenic sarcoma cells.,online information:LLT1,similarity:Contains 1 C-type lectin domain.,tissue specificity:Detected in peripheral blood leukocytes, osteoblasts, lymph node, thymus and spleen.,

Nanjing BYabscience technology Co.,Ltd



Background

This gene encodes a member of the natural killer cell receptor C-type lectin family. The encoded protein inhibits osteoclast formation and contains a transmembrane domain near the N-terminus as well as the C-type lectin-like extracellular domain. Several alternatively spliced transcript variants have been identified for this gene. [provided by RefSeq, Oct 2010],

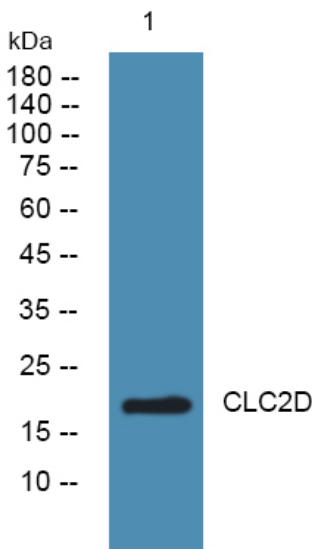
matters needing attention

Avoid repeated freezing and thawing!

Usage suggestions

This product can be used in immunological reaction related experiments. For more information, please consult technical personnel.

Products Images



Western blot analysis of lysates from Jarkat cells, primary antibody was diluted at 1:1000, 4° over night