



SIAL Polyclonal Antibody

Catalog No	BYab-07266
Isotype	IgG
Reactivity	Human;Rat;Mouse
Applications	WB;ELISA
Gene Name	IBSP BNSP
Protein Name	Bone sialoprotein 2 (Bone sialoprotein II) (BSP II) (Cell-binding sialoprotein) (Integrin-binding sialoprotein)
Immunogen	Synthesized peptide derived from human protein . at AA range: 230-310
Specificity	SIAL Polyclonal Antibody detects endogenous levels of protein.
Formulation	Liquid in PBS containing 50% glycerol, and 0.02% sodium azide.
Source	Polyclonal, Rabbit,IgG
Purification	The antibody was affinity-purified from rabbit antiserum by affinity-chromatography using epitope-specific immunogen.
Dilution	WB 1:500-2000 ELISA 1:5000-20000
Concentration	1 mg/ml
Purity	≥90%
Storage Stability	-20°C/1 year
Synonyms	
Observed Band	34kD
Cell Pathway	Secreted.
Tissue Specificity	
Function	function: Binds tightly to hydroxyapatite. Appears to form an integral part of the mineralized matrix. Probably important to cell-matrix interaction. Promotes Arg-Gly-Asp-dependent cell attachment.,miscellaneous: It is possible that the segments of clustered carboxyl groups mediate the strong binding to hydroxyapatite.,PTM: N-glycosylated; glycans consist of sialated and core-fucosylated bi-, tri- and tetraantennary chains.,PTM: O-glycosylated at eight sites; mucin-type glycans contain Gal, GlcNAc, GalNAc and terminal NeuAc.,PTM: Sulfated on either Tyr-313 or Tyr-314.,
Background	The protein encoded by this gene is a major structural protein of the bone matrix. It constitutes approximately 12% of the noncollagenous proteins in human bone and is synthesized by skeletal-associated cell types, including hypertrophic

Nanjing BYabscience technology Co.,Ltd



chondrocytes, osteoblasts, osteocytes, and osteoclasts. The only extraskelatal site of its synthesis is the trophoblast. This protein binds to calcium and hydroxyapatite via its acidic amino acid clusters, and mediates cell attachment through an RGD sequence that recognizes the vitronectin receptor. [provided by RefSeq, Jul 2008],

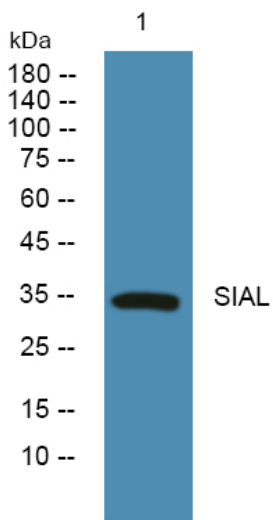
matters needing attention

Avoid repeated freezing and thawing!

Usage suggestions

This product can be used in immunological reaction related experiments. For more information, please consult technical personnel.

Products Images



Western blot analysis of lysates from PC12 cells, primary antibody was diluted at 1:1000, 4° over night