



ERR1 Polyclonal Antibody

| | |
|---------------------------|--|
| Catalog No | BYab-07262 |
| Isotype | IgG |
| Reactivity | Human;Rat;Mouse |
| Applications | WB;ELISA |
| Gene Name | ESRRA ERR1 ESRL1 NR3B1 |
| Protein Name | Steroid hormone receptor ERR1 (Estrogen receptor-like 1) (Estrogen-related receptor alpha) (ERR-alpha) (Nuclear receptor subfamily 3 group B member 1) |
| Immunogen | Synthesized peptide derived from human protein . at AA range: 160-240 |
| Specificity | ERR1 Polyclonal Antibody detects endogenous levels of protein. |
| Formulation | Liquid in PBS containing 50% glycerol, and 0.02% sodium azide. |
| Source | Polyclonal, Rabbit,IgG |
| Purification | The antibody was affinity-purified from rabbit antiserum by affinity-chromatography using epitope-specific immunogen. |
| Dilution | WB 1:500-2000 ELISA 1:5000-20000 |
| Concentration | 1 mg/ml |
| Purity | ≥90% |
| Storage Stability | -20°C/1 year |
| Synonyms | |
| Observed Band | 46kD |
| Cell Pathway | Nucleus . Cytoplasm . Co-localizes to the cytoplasm only in presence of MAPK15. |
| Tissue Specificity | Brain,Cervix,Colon,Epithelium,Kidney,Lung,Placenta,Uterus, |
| Function | function: Binds to an ERR-alpha response element (ERRE) containing a single consensus half-site, 5'-TNAAGGTCA-3'. Can bind to the medium-chain acyl coenzyme A dehydrogenase (MCAD) response element NRRE-1 and may act as an important regulator of MCAD promoter. Binds to the C1 region of the lactoferrin gene promoter. Requires dimerization and the coactivator, PGC-1A, for full activity. The ERRalpha/PGC1alpha complex is a regulator of energy metabolism.,induction: Induced by PGC1alpha in a number of specific cell types including heart, kidney and muscle.,PTM: Phosphorylation on Ser-19 enhances sumoylation on Lys-14 increasing repression of transcriptional activity.,PTM: Sumoylated by SUMO2. Main site is Lys-14 which is enhanced by phosphorylation on Ser-19, cofactor activation, and by interaction with PIAS4. |

Nanjing BYabscience technology Co.,Ltd



Sumoylation enhances repression of transcriptional activity, but has no effect on subcellular localization

Background

The protein encoded by this gene is a nuclear receptor that is closely related to the estrogen receptor. This protein acts as a site-specific transcription regulator and has been also shown to interact with estrogen and the transcription factor TFIIIB by direct protein-protein contact. The binding and regulatory activities of this protein have been demonstrated in the regulation of a variety of genes including lactoferrin, osteopontin, medium-chain acyl coenzyme A dehydrogenase (MCAD) and thyroid hormone receptor genes. A processed pseudogene of ESRRA is located on chromosome 13q12.1. Alternatively spliced transcript variants have been found for this gene. [provided by RefSeq, Sep 2013],

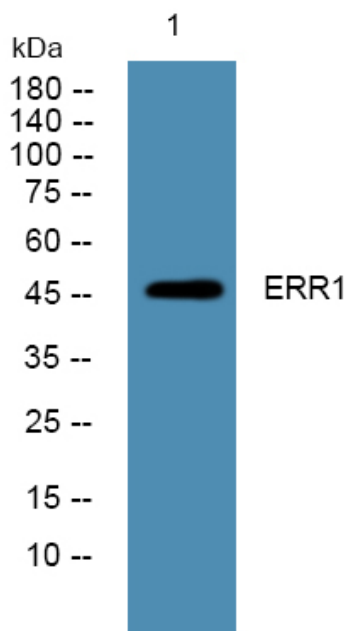
matters needing attention

Avoid repeated freezing and thawing!

Usage suggestions

This product can be used in immunological reaction related experiments. For more information, please consult technical personnel.

Products Images



Western blot analysis of lysates from DU145 cells, primary antibody was diluted at 1:1000, 4° over night

Nanjing BYabscience technology Co.,Ltd